

Land Acquisition and Involuntary Resettlement Due Diligence Report

Document stage: Draft for consultation
Project: 42173-017
October 2022

**Bhutan: Water Flagship Program Support Project –
Construction of Integrated Drinking Water and
Irrigation from Hetshotsamchu, Gasetsho Gom and
Gasetsho Wom Gewogs, Wangdue Phodrang**

Prepared by the Department of Engineering Services, Ministry of Works and Human Settlements (MOWHS), Royal Government of Bhutan for the Asian Development Bank.

CURRENCY EQUIVALENTS

(as of 03 October 2022)

Currency Unit	=	Ngultrum (Nu)
Nu1.00	=	\$ 0.012
\$1.00	=	Nu. 81.63

ABBREVIATIONS

ADB	–	Asian Development Bank
BPT	–	Break Pressure Tank
C&P	–	Consultation and Participation
DDR	–	Due Diligence Report
DE	–	Dzongkhag Engineer
DES	–	Department of Engineering Services
DI	–	Ductile Iron
DMS	–	Detail Measurement Survey
ADAO	–	Assistant Dzongkhag Agriculture Officer
DDR	–	Due Diligence Report
EA	–	Executing Agency
FO	–	Finance Officer
GI	–	Galvanized Iron
GRC	–	Grievance Redressal Committee
GRM	–	Grievance Redressal Mechanism
GOI	–	Government of India
HDPE	–	High Density Polyethylene
IR	–	Involuntary Resettlement
IP	–	Indigenous People
LRO	–	Land Record Officer
MOWHS	–	Ministry of Works and Human Settlement
MOAF	–	Ministry of Agriculture and Forest
NOC	–	No Objection Certificate
PM	–	Project Manager
PMU	–	Project Management Unit
PIUs	–	Project Implementation Units
RDTC	–	Rural Development Training Center
RGOB	–	Royal Government of Bhutan
ROW	–	Right of Way
RP	–	Resettlement Planning
SPS	–	Safeguard Policy Statement
SDP	–	Small Development Project
SSMR	–	Semi-Annual Social Monitoring Report
WFP	–	Water Flagship Project
WTP	–	Water Treatment Plant
WSD	–	Water and Sanitation Division
WSP	–	Water Safety Plan

Dzongkha Glossary

<i>Dzongkhag</i>	District
<i>Dzongdag</i>	District Administrator
<i>Dzongrab</i>	Deputy District Administrator
<i>Dratshang</i>	Monk body
<i>Dungkhag</i>	Administrative Unit (Sub-Division)
<i>Dzong</i>	Fortress
<i>Gewog</i>	Administrative Unit (County)
<i>Gup</i>	Head of Gewog
<i>Thromde</i>	Municipality
<i>Tshokpas</i>	Village headmen
<i>Tsho</i>	Lake
<i>Lhakhang</i>	Buddhist Temple

NOTE

In this report, "\$" refers to United States dollar.

This draft land acquisition and involuntary resettlement due diligence report is a document of the borrower. The views expressed herein do not necessarily represent those of ADB's Board of Directors, management, or staff, and may be preliminary in nature. Your attention is directed to the "terms of use" section of this website.

In preparing any country program or strategy, financing any project, or by making any designation of or reference to a particular territory or geographic area in this document, the Asian Development Bank does not intend to make any judgments as to the legal or other status of any territory or area.

CONTENTS

	Pages
I. INTRODUCTION	1
A. Project Description	1
B. Institutional Framework	1
C. Scope of this Report	1
D. Objective of this Report	3
II. PROJECT DESCRIPTION	3
A. Overall Dzongkhag Description: Wangdue Phodrang	3
B. Brief Description of Gasetsho Gom and Gasetso Wom Gewogs:	3
C. About Project Components	4
III. FIELDWORK AND PUBLIC CONSULTATION	11
A. Outline of Fieldwork	11
B. Public Consultation	12
IV. LAND AVAILABILITY AND RESETTLEMENT IMPACTS	15
A. Land Availability and Involuntary Resettlement Impacts	15
B. Indigenous People (IP)	21
V. INSTITUTIONAL ARRANGEMENT	21
A. Institutional Arrangement and Responsibilities	21
B. Social Safeguards Implementation	26
VI. GRIEVANCE REDESS MECHANISM	28
VII. CONCLUSION AND NEXT STEPS	31
A. Conclusion	31
B. Next Steps	32

APPENDICES

Appendix 1: Persons consulted at MOWHS and Wangdue Dzongkhag	33
Appendix 2: The Google Earth Map of Hetsotsamchu Integrated Drinking Water and Irrigation (22 km)	34
Appendix 3: The Google Earth Map of Villages having command areas under Gasetsho Gom gewog for irrigation from the Hetsotsamchu scheme	35
Appendix 4: The Google Earth Map of Villages having command areas under Gasetsho Gom gewog for irrigation from the Hetsotsamchu scheme	36
Appendix 5: Certification from Dzongkhag Administration on Government land Construction of Project Components	37
Appendix 6: Certification from District Administration Mentioning that the Proposed Project Components will not Impact ANcestral Domain, Religious Place, Graveyard or Any Other Place of Improtance	38
Appendix 7: Summary of Minutes of Consultation Meetings Conducted	39
Appendix 8: Minutes of Consultation Meeting held on 4 June 2022 with Community Forest (CF) members	43
Appendix 9: No objection Clearance from the Community Forest Groups for the project (in Dzongkha)	47

TABLES

Table 1: Summary of Beneficiaries (drinking water and irrigation)	4
Table 2: Proposed Bulk Water Supply Components under Hetsotsamchu Project	5
Table 3: Summary of Transmission Mains	9
Table 4: Location of Off-takes Benefitting Villages and Chainage Points	9
Table 5: Summary of Stakeholder Consultation	14
Table 6: Details of Land Availability, Ownership, and Status of NOC for Intake Structure	15
Table 7: Summary of Transmission Mains	17
Table 8: Details of Delivery Chambers	18
Table 9: Component wise Summary of Involuntary Resettlement Impacts	19
Table 10: Institutional Roles and Responsibilities	26

FIGURES

Figure 1: Overview of Project Areas Showing Alignment with Intake and End-point	4
Figure 2: Photograph of Water source at Hetsotsamchu Stream	7
Figure 3: Photograph of Transmission Mains Alignment through State Reserve Forest	8
Figure 4: Google Earth Map showing old and new realignment sections of the pipeline	9
Figure 5: Photograph of Stream Crossing where Bridge to Carry Transmission Pipes will be Constructed near Delivery Point	10
Figure 6: An Area where Delivery Point will be Constructed at Tingna	10
Figure 7: Photo of consultations held at Wangdue Dzongkhag	12
Figure 8: Institutional Arrangement	22
Figure 9: Grievance Redress Mechanism	29

I. INTRODUCTION

A. Project Description

1. In the 12th Five Year Plan, the Water Flagship Program is being implemented to provide 24x7 access to safe drinking water and irrigation to all the rural and urban communities in the country. In the first phase of the program, 11 *Dzongkhags* and four (4) *Thromdes* were identified. Within the first phase, the Asian Development Bank (ADB) is providing financial assistance to the Royal Government of Bhutan to provide access to 24x7 safe drinking water supply and irrigation to two (2) *Dzongkhags* and one (1) *Thromde*. The water supply components comprise the construction of integrated drinking and irrigation systems, intake structure, reservoirs, transmission mains, distribution networks. The Ministry of Works and Human Settlement (MOWHS) is the project proponent for the Water Flagship Project.

2. Recognizing water as a pivotal issue for the country's development, the government has included 'sustainable water' as a Nation Key Result Area in the Twelfth Five-Year Plan (2018-2023) and has developed the Water Flagship Program (WFP) to guide its implementation. The WFP will undertake key interventions at the country level to strengthen water sector performance to improve access to 24x7 safe drinking water. The total budget from ADB for WFP is USD 14 million for infrastructure development and capacity building and USD 6 million for incorporating disaster risk reduction and climate-resilient elements. The project will also support institutional improvement identified under the WFP prioritizing dzongkhags and thromdes with access to reliable drinking water and irrigation. It will be aligned with the Bhutan Water Act (2011), Water Regulation of Bhutan (2014), Drinking Water Quality Standards (2016), and National Irrigation Policy (2012) which set key principles, responsibilities, and standards for the water sector. The Project Management Unit (PMU) is based at the Water and Sanitation Division (WSD) under the Department of Engineering Services (DES), Ministry of Works and Human Settlement (MOWHS). The DES is the Executing Agency (EA), while the *Dzongkhags* and *Thromde* will be Project Implementing Units (PIUs).

B. Institutional Framework

3. For the implementation of the water flagship project, there will be a set of institutions involved at various levels of the Project. The Department of Engineering Services (Water and Sanitation), DES (W&S), under the Ministry of Works and Human Settlements is the executing agency (EA). A Project Management Unit (PMU) is established within the Department of Engineering Services (Water and Sanitation), MOWHS, headed by a Project Director. The PMU will be responsible for planning, implementation, monitoring and supervision, and coordination of overall project activities.

4. The PIUs will be established at two *dzongkhags* and one at the *Thromde* level. The PIUs will be directly under the PMU and will be responsible for the daily coordination and execution of the project activities. The PIUs will be established at Zhemgang *dzongkhag* and Hetshotsamchu under Wangduephodrang *dzongkhag* and Thimphu *Thromde*.

C. Scope of this Report

5. There are two packages under Water Flagship Program Support Project for Wangduephodrang, (i) Package 1 consists of the construction of intake weir and diversion weir to sediment trap and stilling chambers; construction of 22 km raw water transmission mains consisting of ductile iron (DI) of 700 mm diameter (dia.) and high-density polyethylene (HDPE)

pipes of 710 mm diameter; from primary intake till the final delivery point, construction of 10 meter host bridge for transmission mains pipeline; and construction of 70 cubic meter (cu.m.) silt trap sedimentation tank at the intake area; and (ii) Package 2 consists of construction of pre-sedimentation tank for chlorination treatment, break pressure tanks , and distribution networks from the off-takes to the villages for drinking water and irrigation command areas under the Gasetsho Wom and Gasetsho Gom *gewogs* under Wangdue Phodrang *Dzongkhag*. This due diligence report is prepared for the bulk water components of water supply and irrigation for Hetshotsamchu project. Transect walk and drive-through along the transmission mains pipeline were undertaken, during the site visit The DDR will be updated after the design finalization for irrigation efficiency in distribution from bulk supply up to the farm level and drinking water distribution network, if no involuntary resettlement impacts are identified for the irrigation distribution components designed after loan approval. A separate resettlement plan will be prepared if involuntary resettlement impacts are assessed for the drinking water and irrigation distribution from bulk supply to household level and farm level respectively, in line with the resettlement framework.

6. This due diligence report (DDR) is prepared for the construction of integrated drinking and irrigation water supply to Gasetsho Gom and Gasetsho Wom *gewogs* and laying of water transmission mains from Hetshotsamchu source to the delivery point at Tingna. The total length from the source to the delivery point is 22 km. The report is prepared based on the available detailed design and information for Package 1 and pre-sedimentation chlorination tank for water treatment plant under Package 2. The DDR will be updated and reconfirmed for final involuntary resettlement impacts after completion of final design and detail measurement survey (DMS) for irrigation and drinking water distribution components if no involuntary resettlement impacts are assessed.

7. The DDR is prepared aligned with ADB Safeguard Policy Statement, 2009. During the due diligence exercise for drinking water and irrigation bulk water supply components, no involuntary resettlement or private land acquisition impacts have been identified for which preparation of resettlement planning document is deemed not necessary for the bulk water supply project. Different stakeholders were consulted during the due diligence process, discussions on the project activities and site visits undertaken, is attached in **Appendix 7 and 8**.

8. The Project Management Unit at the DES under MOWHS will ensure compliance with ADB SPS 2009 for Water Flagship Project implementation which will provide drinking water and irrigation water supply to Gasetsho Gom and Gasetsho Wom *gewog* under Wangdue Phodrang *dzongkhag*. Involuntary resettlement-related impacts will be further reconfirmed before contract award for bulk water supply components, if there is change in design or scope of work. Involuntary resettlement impacts for irrigation water supply components and drinking water distribution network will be assessed based on final design and DMS, and if required a resettlement plan will be prepared and shared with ADB for approval in line with resettlement framework. A due diligence report is prepared, for the bulk drinking and irrigation water supply components, as field investigations have help ascertain that no private land or other privately owned properties, will be affected, and no presence of non-titleholders or users is observed. The final document will be reviewed and disclosed on implementing agency and ADB websites. No civil works contract package will be awarded and started before the completion of the final document (DDR or resettlement plan implementation) for package 1 and 2. The implementation agency is responsible to hand over the project land/site to the contractor free of encumbrance.

D. Objective of this Report

9. This due diligence report (DDR) is prepared with the objective of documenting that the project is free of involuntary resettlement impact such as land acquisition, physical displacement, economic displacement, adverse impact on livelihood, community properties or any other impacts, based on a review of land records, stakeholder consultations and field visits to proposed project locations. The DDR, therefore, has been prepared for the assessed bulk components (Package 1) and pre-sedimentation chlorination tank under Package 2 of the project. This document provides copies of relevant no objection certificates, land ownership certification, minutes of meetings and photographs.

II. PROJECT DESCRIPTION

A. Overall Dzongkhag Description: Wangdue Phodrang

10. Wangdue Phodrang *dzongkhag* is traditionally known as Shaa region.¹ The *dzongkhag* lies in the western region of the country. The altitudinal range in the district varies between 800 to 5800 meters above sea level (masl). The *dzongkhag* covers an area of 4,029.03 sq km. The *dzongkhag* has 15 *gewogs*. The *dzongkhag* is well connected with the national highways namely the east-west lateral highway from Thimphu to Trashigang and the Thimphu to Tsirang highway passing through the district. Within the district, road networks comprise of 120.9 *gewog* connectivity roads connecting all *gewogs* and 579 km of farm roads connecting villages. The district also has areas under protected areas namely the northern half is within the Wangchuck Centennial Park. In the northwest there are pockets under the Jigme Dorji National Park while in the southeastern part, there are areas under the Jigme Singye Wangchuck National Park. Several biological corridors dissect the district to connect to Bhutan's extensive national park system.

B. Brief Description of Gasetsho Gom and Gasetso Wom *Gewogs*:

11. Gasetsho Gom *gewog*, with an area of 46.8 square kilometers, at an altitude range from 1200-1500 meters above sea level (masl), is located just above the Punatshangchu Hydropower Project Authority (PHPA) colony. The *Gewog* Centre is 18 kilometers away from the Dzongkhag Administration at Wangdue. The *gewog* has five *Chiwogs*² (electoral divisions) with four *Tshogpas* (head man). In total, there are 187 households according to the annual Renewal Natural Population and Housing Census of Bhutan, 2017 with a population of about 3960 persons. The *gewog* also has the biggest power projects in the country, namely Punatshangchu Hydropower Project Phase 1 and phase 2 nearby. The main cash crop of the people is paddy. They sell vegetables and wild forest products to the buyers from Punatshangchu project and Bajo.

12. Gasetsho Wom (Lower Gaselo) *gewog* covering an area of 207.85 square km, is located towards the southwest from the Wangdue *Dzongkhag*. The terrain is mainly rugged with pockets of some gent slopes. The Punatsang Chu and Tsirang highway runs along the *gewogs* eastern border, forming the border between Gasetsho Wom and Rubeisa *Gewog*. The *gewogs* consist of five *Tshogpas* from a total of nine villages (Phakha, Shingkhey, Khatoe, Shingkhey Khamoe, Tapchakha, Mepisa, Mephina, Gikha, Hetshokha and Haebisa). The *gewog* has 106 households holding a population of about 959 (106 households).³

¹ Source: <http://www.wangduephodrang.gov.bt/Profile> Gups and *Gewogs*

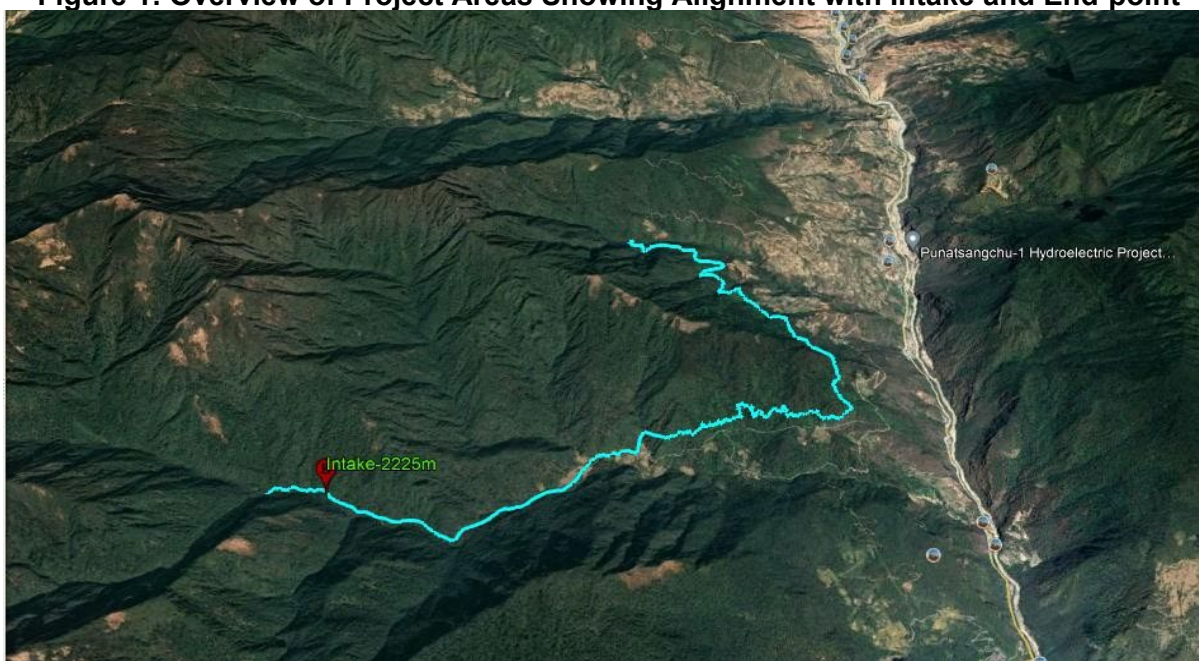
² *Chiwogs* are former third-level administrative divisions of [Bhutan](#) below [gewogs](#). Under Constitution, *Chiwogs* or *Chios* are referred as electoral division.

³ Source: Population and Housing Census of Bhutan, 2017, National Statistics Bureau of Bhutan, Royal Government of Bhutan (RGOB)

C. About Project Components

13. The proposed project is located both in urban and rural areas of two *gewogs* Gasetsho Gom and Gasetsho Wom of Wangdue Phodrang district and is expected to bring significant benefits related to irrigation and drinking water supply to the population residing in the project areas. The overall water supply facilities will improve convenience to the public and as a result, people will be benefitted immensely in terms of adequate and reliable supply of drinking water, wherever there are current drinking water shortages, as well as for irrigation in several villages in the two *gewogs*. This extended supply of irrigation and drinking water will contribute to the endemic water shortages faced by people living in Gasetsho Gom and Gasetsho Wom villages. The outcome of the project is expected to drastically improve better health and hygiene through the supply of clean water for drinking and domestic use and for irrigation of unserved potential wetland and fallow land in command areas of two *gewogs*. The google map below (figure 1) shows the alignment of the project marking the intake and the end point.

Figure 1: Overview of Project Areas Showing Alignment with Intake and End-point



Source: Project Design Team, Wangdue Phodrang, Project Management Unit (PMU)

14. The project will benefit households in Gasetsho Gom and Gasetsho Wom villages; details are presented in Table 1.

Table 1: Summary of Beneficiaries (drinking water and irrigation)

Gewogs	Villages	Household #	Population (#)		
	#		Female	Male	Total
Gasetsho Gom	18	242	315	347	662
Gasetsho Wom	16	127	294	322	616
Central School					750*
Primary School					250*
Total	34	369	609	669	2,278

Source: Project Design Team, Wangdue Phodrang, Project Management Unit (PMU)

Note: * School Students

15. Under the drinking and irrigation bulk water supply project for Wangdue Phodrang, the following components (table 2) are proposed to be constructed on government land. It is confirmed by the Wangdue Phodrang *Dzongkhag* Administration that all the proposed bulk water supply components will be constructed on land parcels under government ownership (Appendix 5); the *Dzongkhag* Administration has also certified that construction of proposed project components will not impact any ancestral domains, religious places, graveyards, or any other place of cultural importance to the local community (Appendix 6).

Table 2: Proposed Bulk Water Supply Components under Hetsotsamchu Project

Sl. No.	Proposed Project Component	Details of Proposed Component	Quantity of Structures	Land coverage by structure (sq. m)
1	Construction of Intake Structure	Main Intake at Hetsotsamchu Stream to abstract 608 lps of water Crest height - 1m, Crest length - 15m Weir length - 10m Protection wall – length of 15m and height of 2.5m Gravel trap Silt trap - 6m x 3m, depth 20m	One intake	Diversion Channel, 1.8m x 2.0m, length: 20m = 40 sq.m Gravel trap- 8m x 4m, depth 2.5m = 32 sq.m Silt trap - 2m x 2m, depth 1.5m = 4 sq.m Total land area required: 76 sq.m
2	Construction of WTP (for chlorination)	Pre-Sedimentation Tank Near the Intake Site: 15m X 6m	One	Land area: 90 sq.m
3	Raw water transmission mains	Pipe: HDPE Diameter: 710 mm Length: 17 km Pipe: DI Diameter: 700 mm Length: 5 km To be laid in a trench: Width- 1.2 m Depth- 1.8m (max.) in a 3m corridor for pipeline This water transmission mains will be laid mostly underground with average depth of 1.2 m along the 22 km pathway (temporary) to be temporarily constructed as part of the sub project's methodology. This pathway is where the transmission mains will be laid. Some sections of this transmission mains may be installed above ground depending on the terrain and/or geology of the area.	Single pipeline of 22 km	Land area: 27,128.24 sq.m
4	Offtakes	10 locations along the transmission mains	10 numbers	(Refer Serial no. 7)

Sl. No.	Proposed Project Component	Details of Proposed Component	Quantity of Structures	Land coverage by structure (sq. m)
		<p>At the following chainages:</p> <ul style="list-style-type: none"> • Tonglobjee, Tongchaykha(0+5km), • Hesotshokha (0+6km), • Keylakha (0+7.5km); • Shasokha, Zamtok, Palom(0+9.5km), • Tenchekha, Gekha, Mebisa, Mephuna (0+12km), • Tabchekha (0+13.3km), • Shingkhoe Khamey (0+14.4km), • Shingkhay Khatoed (0+16km), • Phakha (0+19.5km) and • Tingna (0+22km) at the final delivery point. 		
5	Valves	<p>Air release valves to release any entrained air in the water system</p> <p>Flush out valves in chambers to release trapped sediment from the pipes</p>	21 numbers	<p>Air valves are installed on pipes, so no land requirement.</p> <p>Wash-out chamber size: 1.2m x 1.2m (Inside dimension). Normally beside drainage channel / river</p> <p>Land area required for 21 wash-out chambers: 30.24 sq.m</p>
6	Bridge	<p>As host bridge to install/anchor the transmission mains over the stream in Tingna near the delivery point</p> <p>Bridge of 10 m length and 1.5 m width</p>	One	-
7	Delivery Chamber	<p>Water distribution point for drinking water and irrigation</p> <p>3-chambered Delivery chamber</p> <p>Dimension: 7m x 4m, depth 2.5m</p>	10 numbers	<p>Each Scheme off-take chamber would be of 7m x 4 m</p> <p>About 280 sq. m land will be required for 10 off-take chambers</p>

Source: Project Design Team, Wangdue Phodrang, Project Management Unit (PMU)

1. Components under Bulk Water Supply

16. **Intake Structures.** For the construction of intake structures from the Hetshotsamchu source, located at an elevation of 2225 meters above sea level (masl) and around 6 km from Hetsokha village, the objective is to abstract water from the Hetshotsamchu stream installing new

intake structures at this source. This main source is at Hetsotsamchu stream located at an altitude of 2225 meters in state reserve forest (SRF) under Gasetsho Gom Gewog. The intake works will consist of crest walls, weir, protection walls, gravel trap and silt trap. This main source is the starting point of the 22 km raw water transmission mains that will be installed as part of the project. During site visit, it was confirmed that there are no indigenous people, and for that matter, any other community living around the source and intake points.

Figure 2: Photograph of Water source at Hetsotsamchu Stream



Source: Project Design Team, Wangdue Phodrang, Project Management Unit (PMU)

17. **Construction of Pre-Sedimentation Tank for Water Treatment.** A pre-sedimentation tank will be constructed beside the intake structure for chlorination purpose; the sedimentation tank will be of 15 m x 6 m size.

18. **Construction of Transmission Mains.** The scope of work under the project for supplying drinking and irrigation water to the villages and command areas of Gasetsho Wom and Gasetsho Gom villages include the construction of 22 km transmission mains. The transmission main pipe consists of high-pressure ductile iron (DI) pipe of 700 mm diameter for 5 km length and the rest 17 km length will consist of HDPE pipe of 710 mm diameter. The pipes will be aligned from the source at Hetsotsamchu in state reserve forest (SRF) and then pass above the villages of Tonglabji and Tenchekha before entering again the SRF and community forests registered in the names of some villages. The pipeline will finally terminate at the delivery point at Tingna which is in Gasetsho Gom. The google earth map in below Figure 4, it shows the previous alignment section (in red) which was realigned (in thick green) through design optimization to reduce length

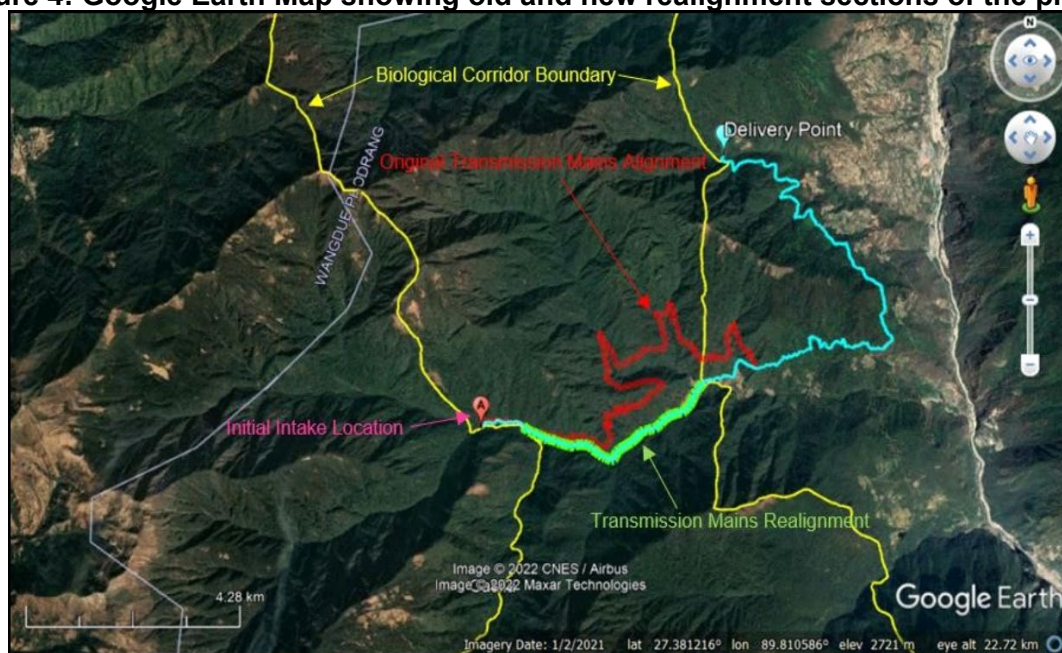
of the transmission mains.

Figure 3: Photograph of Transmission Mains Alignment through State Reserve Forest



Source: Project Design Team, Wangdue Phodrang, Project Management Unit (PMU)

Figure 4: Google Earth Map showing old and new realignment sections of the pipeline



Source: Project Design Team, Wangdue Phodrang, Project Management Unit (PMU)

19. A summary of the transmission mains is presented below in Table 3.

Table 3: Summary of Transmission Mains

Sl. No.	Description	Details
1	Length of raw water transmission mains (DI pipe) (km)	5 km
2	Length of raw water transmission mains (HDPE pipe) (km)	17 km

Source: Project Design Team, Wangdue Phodrang, Project Management Unit

20. **Off-takes.** At intervals along the pipeline, depending on the location of command areas and villages, off takes will be provided from the transmission mains to divert water (irrigation and drinking water) to the command areas. In total 10 offtakes are proposed (see Table 4 for details). The google earth map showing the location of offtakes is appended in Appendix 2, 3 and 4. From the mains water will be channeled through 10 offtakes to command areas of villages. Details of off-takes and their coverage are presented below.

Table 4: Location of Off-takes Benefitting Villages and Chainage Points

Off-take No.	Name of Villages	Chainage	Pipe type	Diameter (mm)	Embedment depth (m)
1	Tonglobjee, Tongchaykha	0+5 km	HDPE	710 mm	1.2
2	Hesotshokha	0+6 km			
3	Keylakha	0+7.5 km			
4	Shasokha, Zamtok, Palom	0+9.5 km			
5	Tenchekha, Gekha, Mebisa, Mephuna	0+12 km			
6	Tabchekha	0+13.3 km			
7	Shingkhoe Khamey	0+14.4 km			
8	Shingkhey Khatoed	0+16 km			
9	Phakha	0+19.5 km			

10	Tingna	0+22 km at the final delivery point.			
----	--------	--------------------------------------	--	--	--

Source: Project Design Team, Wangdue Phodrang, Project Management Unit (PMU)

21. **Valves:** Similarly, at various intervals air valves will be provided to release any entrained air in the water systems and also flush out valves to release trapped sediment from the pipes. In total, 21 of these will be provided along the transmission mains; 21 wash-out chambers will be constructed of size 1.2m x 1.2 m.

22. **Bridge:** There is a stream at Tingna near the delivery point across which a host bridge is proposed to be constructed to anchor the transmission mains over the stream. The bridge will span 10m and will be at a height of 3m.

Figure 5: Photograph of Stream Crossing where Bridge to Carry Transmission Pipes will be Constructed near Delivery Point



Source: Project Design Team, Wangdue Phodrang, Project Management Unit (PMU)

23. **Delivery chamber:** Ten three-chambered delivery chambers, each of dimension 7m x 4 m and depth of 2.5m, will be constructed with each off-take scheme. From this point, water will be distributed to several existing irrigation channels benefiting the farmers of Gasetsho Gom and Gasetsho Wom villages as well as a separate pipeline for providing drinking water to these villages.

Figure 6: An Area where Delivery Point will be Constructed at Tingna



Source: Project Design Team, Wangdue Phodrang, Project Management Unit (PMU)

24. From the water transmission mains, irrigation pipelines from off take points (**table 5**) will channel water to irrigation command areas and drinking water distribution network to villages in Gasetsho Wom and Gasetsho Gom *gewogs*. The use of pipelines will reduce the potential loss of water due to seepage or evaporation.

25. The google earth maps showing the Hetshotsamchu water source and intake are attached in Appendix 2. The Google earth map illustrating the raw water transmission mains, and some command areas are appended in Appendix 2. The google earth map of existing command areas including delivery point are in Appendix 3 and 4.

III. FIELDWORK AND PUBLIC CONSULTATION

A. Outline of Fieldwork

26. Field inspection of the site under Gasetsho Wom *gewog* in which the source and intake site is located was undertaken on 1st June 2022. The team visited the intake and walked approximately 12 km to the source and back along the transmission mains realigned section. Following this, the team also visited the delivery point site and Tingna in Gaetsho Wom *gewog*. The main purpose of the field visits was to undertake due diligence of the project foot-print, identify potential social impacts, if any and conduct one-on-one consultations with the relevant stakeholders including officials to verify and confirm whether the project scope requires any involuntary resettlement and/or land acquisitions.

27. During site visit with Project Manager of the PIU and Dzongkhag Engineer on May and June 2022, it was confirmed that, the sites for construction of bulk water supply project components, no private land, structures, fruit trees or any other privately owned assets or livelihoods of titleholders or non-titleholders will be affected since it was confirmed that all components will be located on government-owned, unused, and vacant land. A portion of the raw water transmission mains will pass through a community forest area; a 'no objection' for the pipeline to be aligned across the community forest area was obtained (Appendix 9).

B. Public Consultation

28. To ensure peoples' participation in the planning phase of this project and to treat public consultation and participation as a continuous two-way process, the consultations and project awareness campaigns are defined to open up the line of communication between various stakeholders and the project implementing authorities.

29. Aiming at the promotion of public understanding especially the beneficiaries and fruitful solutions of developmental problems such as local needs and problems and prospects, other stakeholders were also consulted. Consultations and discussions were held with the public and other key stakeholders including local government. The primary stakeholders of the project have been identified as those rural households residing in Gasetsho Gom and Gasetsho Wom *gewogs* in May and June 2022. The other stakeholders identified are, MOWHS (DES), Land and Survey Division (MOAF), and District Agriculture Officer (DAO), Finance Officer (FO), Land Record Officer (LRO), Gup, and village headmen under Wangdue *dzongkhag* administration as well as the Basochu Hydropower Project which also uses the water from the Hetshotsamchu source.

30. The debriefing for Hetshotsamchu integrated water supply using presentations, Google earth maps was done by the design team, representatives from Bajo Dzongkhag at MOWHS on 26 May 2022. During site visits, consultations were conducted with the key stakeholders in line with ADB's requirements on social considerations. A consultative meeting was convened by the *Dzongkhag* on 2 June 2022 in which several stakeholders including local government, water users of different villages and village leaders of both the *gewogs* as well as representative from the Basochu Hydro project were present. Consultations were also held with the local government officials in Wangdue on 2 June 2022. Further, a meeting with three Community Forest groups of Gasetsho Wom *gewog* office was held on 4 June 2022.

31. During the visits, it was determined that the alignment passes through state reserved forests (SRF), along existing farm roads and also through three community forests. The consultants and design team held consultations with members of the community forest groups, met the local government officials and other stakeholders in separate consultative meetings. It was determined that none of the sections of the transmission main pipeline or other structures will be located on any private land or religious institutions; the project components will be constructed on government land and right of way of government roads.

32. The meetings were conducted to inform people about the project, to understand the drinking and irrigation water situation as well as to verify the impact of project components on land acquisition and to minimize involuntary resettlement issues in detail, which is in line with the ADB's SPS, 2009. The consultations helped to ascertain that there were no potential involuntary resettlement impacts or private land acquisition for the proposed project components based on the final design and to seek people's views on anticipated impacts. A summary of the consultations and findings are provided in Table 5 (Appendix 7 and 8).

Figure 7: Photo of consultations held at Wangdue Dzongkhag



33. This DDR will be made available at public locations on the websites of the government (MOWHS) and ADB. The PIU/PMU will further coordinate the schedule with the contractor and ensure public consultations (if necessary) are carried out before the start of civil works and during the implementation phase.

Table 5: Summary of Stakeholder Consultation

Sl. No.	Date	Venue of Meeting	Participants	Total No. of Participants	No. of Female Participants	Key Issues Discussed & Concerns
1	02-Jun-22	DYT Meeting Hall, Wangdue Dzongkhag	District Administrator, Deputy Administrator, Engineers, Forestry officials, Basochu HPP, Local government and public representative from 2 gewogs and ADB Mission	22	4	(i) Clarification sought on whether the issue is related to lack of water or difficulties in water management; (ii) Challenges faced by the community related to water supply; (iii) Existing water management system; (iv) About the proposed project on irrigation and drinking water; and (v) Expectations of the community members from the project.
2	02-Jun-22	Meeting hall, Wangdue Dzongkhag	Representatives of local government and WUAs	18	4	(i) Water issues and distribution in the gewogs; (ii) Use of SCADA for water management.
3	04-Jun-22	Field	Members of 3 community Forestry Groups & Local Government	15	3	(i) Project impacts, construction access, project affected household; (ii) Grievance redressal mechanism; (iii) potential impacts to the community; and (iv) Whether any trees will be fell during laying of pipeline. The felled trees should be handed over to the community forest groups and that they will sell the trees.
Total				55	11	

34. The PIU/PMU will ensure that public consultations are carried out before the start of civil works and during the implementation phase maintaining COVID-19 safety protocols as laid down

by the government. Virtual consultation or meeting in small groups with the public or representatives of the public (e.g., community members, civil society organization representatives, elected representatives etc.) will be conducted during the project implementation phase. Greater efforts to involve women in public consultations will be made, in line with the project's gender equality and social inclusion action plan.

IV. LAND AVAILABILITY AND RESETTLEMENT IMPACTS

35. The field inspections and consultations confirm that the construction of bulk drinking and irrigation water supply system to Gasetsho Gom and Gasetsho Wom *gewogs* under Wangdue *Dzongkhag* from the water source at Hetshotsamchu stream, till delivery point at Tingna will be constructed on government-owned vacant unused land. Hence, the bulk water supply project will not entail involuntary private land acquisition; involuntary resettlement impacts are also not assessed for implementation of the bulk water supply project components. However, some sections of the pipeline will be aligned across community forests registered in the name of some communities located around Gasetsho Wom *gewog*; ownership of these forests rest with government. The communities have issued a No Objection Certificate permitting alignment of the pipeline through the community forests. A letter on land verification was provided by PIU, Wangdue dzongkhag administration (Appendix 5). The land parcels available for bulk water supply are government-owned, vacant and unused lands. No impacts (temporary or permanent) to structures along the government right-of-way or temporary loss of income to shops/businesses is anticipated. However, this will be reconfirmed during design verification by the contractor before start of construction work.

36. The due diligence report (DDR) outlines the land availability and resettlement impacts for the bulk water supply components for Gasetsho Gom and Gasetsho Wom *gewogs* under Wangdue *Dzongkhag*, based on final design details; the land availability, ownership and resettlement impacts for the drinking water network and irrigations components will be updated to the DDR once the design is finalised for the component.

A. Land Availability and Involuntary Resettlement Impacts

1. Intake Structures

37. The construction of intake structures near the Hetshotsamchu source, located in state reserve forest (SRF) under Gasetsho Gom Gewog, will require about 76 sq.m of land. The intake structures will be constructed within the state reserve forest, which is under the ownership of Royal Government of Bhutan (RGOB). It is assessed that extracting water from the stream will not impact any downstream users; since no community, downstream of the intake, taps the existing water sources from which the project will abstract water. The PMU will obtain no objection from the Royal Government of Bhutan for construction of the intake structure, and the same will be appended to the updated DDR.

Table 6: Details of Land Availability, Ownership, and Status of NOC for Intake Structure

Project Component	Location	Ownership	Area required (m ²)	Remarks/ NOC Status	Potential IR Impact
Construction of Intake Structure (which includes Diversion Channel and	Hetsotsa mchu	Royal Government of Bhutan (RGOB)	76	NOCs to be obtained	The land for the intake and pre-sedimentation tank is state-owned forest land, under RGOB. It

Gravel Trap, Silt Trap)					is not under any kind of use. Construction of the intake structures and pre-sedimentation tank will not result into land acquisition, involuntary resettlement or indigenous people's impact. Further, no community downstream of the intake taps the existing water sources from which the project will abstract water, no impacts to downstream users is foreseen.
Construction of pre-sedimentation tank	Hetsotsa mchu	Royal Government of Bhutan (RGOB)	90	NOCs to be obtained	

Source: Project Management Unit, and Project Implementation Unit (PIU), Wangdue dzongkhag

2. Pre-sedimentation Tank

38. A pre-sedimentation tank will be constructed beside the intake structure for chlorination purpose. The sedimentation tank will require about 90 sq.m of land; it will be constructed on government vacant unused land. No land acquisition or involuntary resettlement impact due to construction of pre-sedimentation tank is assessed.

3. Raw Water Transmission Mains

39. About 22 km of raw water transmission mains will be installed from the intake site to the delivery point. The trenching work for pipe laying will be done through state reserve forest (SRF), namely government owned land in forests. Some sections of which are aligned above villages and in some sections aligned above existing farm roads near Hetsotsamkha and Tenchekha villages. A transect walk along the section of the anticipated alignment of the pipeline suggests that the pipeline will not encroach on any private land or structures along the road or any private land. Therefore, there are no involuntary resettlement impacts are assessed.

40. It is also assessed that a portion of the raw water transmission mains (about 2.6 km) will pass through community forest area along Hetsotsamkha, Shingkey Khatoe and Tapchakha villages. The community forest group members maintain these forests and share the benefit by selling the trees. The community forests registered in the name of some communities located around Gasetsho Wom *gewog* and the ownership of these forests rest with government. Following are the group members for the three groups identified from three villages where the pipeline will be laid.

- (i) Hetsotsamkha – 12 households
- (ii) Shingkey Khatoe - 15 households

(iii) Tapchakha – 12 households⁴

- a. Consultation with the community forest group members revealed that they are aware about the irrigation and water supply project, and that the raw water pipeline will be laid through the community forest; the construction work may potentially lead to felling of trees. It was specifically mentioned that the felled trees from their community forest, after the commencement of work, should benefit members only. The members of the community forest groups claimed that they should be allowed to take the felled trees. This will be reflected in the contractual requirements for the package. It is assessed that felling of community forest trees will not cause any involuntary resettlement impacts to the group members, as the felled trees will be sold by the group members at market rate and benefit will be shared among the members. The trees along the right of way of the pipeline will be felled by the Natural Resource Development Corporation Limited and handed over to the community forest groups which is in accordance with the forestry rules. The community forest user groups, thus, own the trees of the community forests but the land on which the forests are grown is owned by the government. The community forest user groups will be able to sell the felled trees at market price. Further, the IEE proposes compensatory afforestation. Hence no loss to the community forest users is anticipated.

41. Moreover, the community forest group members, villagers, village headman emphasized that for construction of transmission mains, vehicles should not be permitted without prior consent to extract forest produce. This will be reflected in the contractual requirements for the concerned packages.

Table 7: Summary of Transmission Mains

Project Component	Location	Ownership	Area required (m ²)	Remarks/ NOC Status	Potential IR Impact
Raw water transmission mains – Integrated Pipe Main HDPE pipe, of length 22. km (5 km DI pipe, diameter 700 mm and 17 km HDPE pipe), diameter 710 mm	Hetsotsa mchu intake location to Tingna village	Royal Government of Bhutan (RGOB) and Community Forest Groups	27128.24	NOC is obtained from Community Forest groups. NOC will be obtained from RGOB for laying of transmission mains	The land for the laying transmission main is proposed on the state-owned forest land, community forest land and land under ownership of RGOB. Construction of the transmission mains will not result in land acquisition, involuntary resettlement or indigenous people's impact.

Source: Project Management Unit, and Project Implementation Unit (PIU), Wangdue dzongkhag

42. Laying of transmission mains will not impact private land or crops. The forest clearance, community forest clearance from members from the community forest attended the meeting is appended in **Appendix 9**.

⁴ Head of the households are members to these community forest groups.

4. Delivery Chambers

43. A three-chambered delivery chamber will be constructed with each off-take scheme, each of dimension 7m x 4 m and depth of 2.5m. From this point water will be distributed to several existing irrigation channels benefiting the farmers of Gasetsho Gom and Gasetsho Wom villages as well as a separate pipeline for providing drinking water to these villages. The delivery chambers will be constructed just beside the off-take points along the transmission main alignment and on government land. Each delivery chamber will require about 28 sq. m of land. It is estimated that for construction of 10 delivery chambers about 280 sq.m of land will be required. It is assessed that these small land parcels are under the ownership of government and not under any productive use. There will be no involuntary resettlement impact.

Table 8: Details of Delivery Chambers

Project Component	Location	Ownership	Area required (m ²)	Remarks/ NOC Status	Potential IR Impact
Delivery Chambers – 10 numbers	Tonglobjee, Tongchaykha (0+5km), Hesotshokha (0+6km), Keylakha (0+7.5km), Shasokha, Zamtok, Palom (0+9.5km), Tenchekha, Gekha, Mebisa, Mephuna (0+12km), Tabchekha (0+13.3km), Shingkhoe Khamey (0+14.4km), Shingkhey Khatoed (0+16km), Phakha (0+19.5km) and Tingna (0+22km) at the final delivery point	Royal Government of Bhutan (RGOB)	280	NOC will be obtained from RGOB for construction of delivery chambers	The delivery chambers will be constructed beside the off-take points on government land under ownership of RGOB. Construction of the delivery chambers will not result into land acquisition, involuntary resettlement or indigenous people's impact.

Source: Project Management Unit, and Project Implementation Unit (PIU), Wangdue dzongkhag

5. Valves

44. Air valves will be installed at various intervals to release any entrained air in the water systems and also flush out valves to release trapped sediment from the pipes. Total 21 air valves will be installed along the transmission mains; on land is required for installation of these valves. However, 21 wash-out chambers will be constructed beside the valves, each of size 1.2m x 1.2 m.; 30.24 sq.m land will be required for construction of wash-out chambers. As reported by PIU and PMU these wash-out chambers will be constructed on government land along the transmission mains. No land acquisition and involuntary resettlement impacts are assessed.

6. Distribution network for drinking Water and Irrigation benefiting under Wangdue Dzongkhag

45. The distribution network for drinking water and irrigation is within the scope of this project. However, the design of the irrigation network and drinking water network is still ongoing and therefore the DDR will be updated later when the irrigation and drinking water distribution network designs are available. The DDR will be updated and reconfirmed for final involuntary resettlement impacts after completion of final design and detail measurement survey (DMS) for the drinking water network and irrigation distribution component.

46. A preliminary review of the google maps supplemented with the field visit shows that the irrigation distribution network is from the off-takes, from the transmission main pipeline, from which the water pipeline for irrigation feeds will be channelized into existing irrigation channels covering the command areas. Within the command areas, the farmers currently have existing earthen drains to distribute water to their paddy fields. The farmers maintain traditional water rotation practices for water distribution at the field level. The consultative meetings reveals that there are flaws with the rotation system since conflicts are common during peak water demand periods. The project under the separate Japan Fund for Prosperous and Resilient Asia and Pacific (JFPRAP) project will assess such aspects and support strengthening of water users organization and management. Such conflicts will be addressed by incorporation of measures in the water user bylaws.

47. The civil works contract for the project will have specific provisions related to impact avoidance for pipe laying activities, as well as construction work of high importance (like road crossings), etc. The contractor should ensure that while undertaking trenching of road crossing work, there should be no disruption of traffic. Following measures may be adopted for impact avoidance: (i) announcement of proposed civil works in advance; ii) provision of planks to ensure pedestrian access; (iii) careful timing of implementation to avoid peak hours/days near schools and offices; (v) minimizing construction period to the extent possible; (vii) signage with project details and contact details for grievance redress, and (viii) proper traffic management. These measures will be part of the contract and will be implemented through it, with careful monitoring by the PIU and PMU from time to time.

48. The alignment from Hetsotsamchu source to the proposed delivery point at Tingna will not have an impact on privately-owned assets (temporary or permanent land acquisition). There are neither impacts involving the loss of structures, crops and trees nor will there be any economic impact on livelihoods derived from land, property or businesses.

49. Component-wise summary of Involuntary Resettlement Impact is provided in **Table 9**.

Table 9: Component wise Summary of Involuntary Resettlement Impacts

Sl. No.	Component	Capacity/Size/ Numbers	Location	Land Ownership	IR Impacts
Irrigation and drinking water supply to villages under Gasetsho Gom and Wom gewogs					
1	Construction of Intake structures	608 lps	State Reserve Forest near Hetsotsamchu stream	State Reserve Forest under RGOB	No land acquisition or involuntary resettlement impact is envisaged and contained within the government land. The area is within the state reserve forest and is not under any use.

Sl. No.	Component	Capacity/Size/ Numbers	Location	Land Ownership	IR Impacts
2	Raw water mains	Length: 22 km Pipes of DI 5 km (700 mm dia) and HDPE 17 km (710 mm dia.)	along route from intake to delivery point at Tingna (22 km length)	RGOB and Community Forest Groups	Trench of 1.2 m width and depth of .8 m required to lay pipes underground). No land acquisition or involuntary resettlement impact is envisaged for laying of transmission mains. The community forest groups have provided no objection for laying of transmission mains.
3	Off-takes	10 numbers	along route from intake to delivery point at Tingna (22 km length)	RGOB	No land acquisition or involuntary resettlement impact is envisaged since land is vacant and unused.
4	Bridge	span 10m x 3m height	Host bridge where to install/anchor the transmission mains over the stream near Tingna	RGOB	No land acquisition or involuntary resettlement impact is envisaged. The bridge is across the stream falling within government ownership.
5	Air Valves and wash-out chambers	21 air valves Wash-out chambers each of size 1.2m x 1.2 m	Along the transmission mains	RGOB	Air valves will e installed on transmission mains. Wash-out chambers will be constructed on vacant unused government land beside the air valves. No land acquisition or involuntary resettlement impact is envisaged.
6	Delivery chamber	10 delivery chambers - 3-chambered delivery chamber 7m x 4m, depth 2.5m	At each off-take location up to Tingna	RGOB	The delivery chambers will be constructed beside the off-take points on government land. No land acquisition or involuntary resettlement impact is envisaged since the

Sl. No.	Component	Capacity/Size/ Numbers	Location	Land Ownership	IR Impacts
7	Construction of chlorination water treatment plant for chlorination treatment	Near the Intake Site: Size: 15m X 6m	Near Intake point	RGOB	There will be no land acquisition or involuntary resettlement impact envisaged during construction of chlorination tank. The site for the tank is government land which is vacant and unused.

Source: Project Design Team, Wangdue Phodrang, Project Management Unit (PMU)

Note: Due diligence on involuntary resettlement impacts for distribution network for water supply and irrigation will be conducted upon finalization of detailed design.

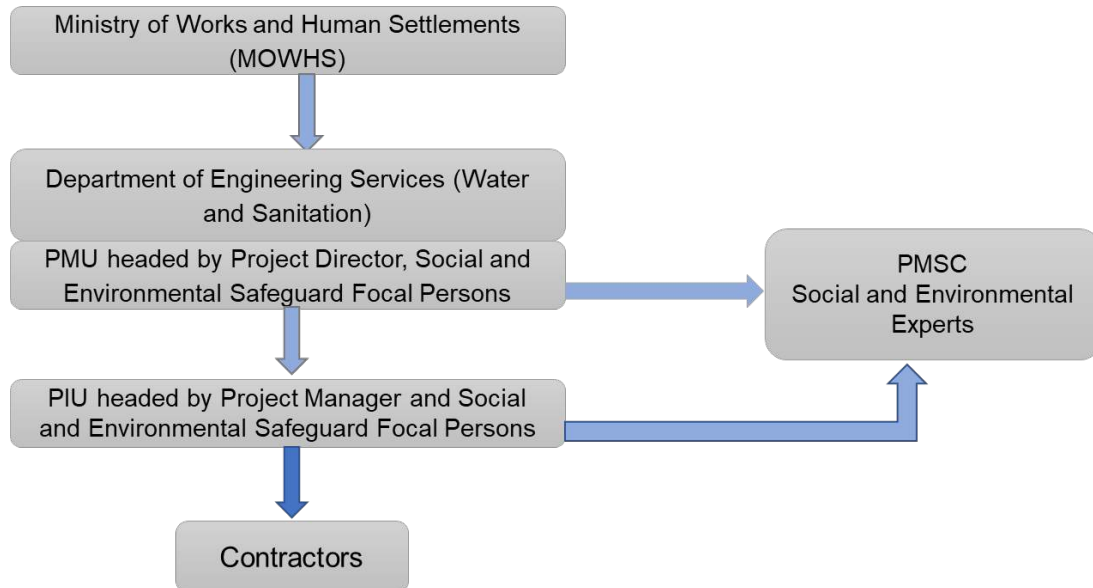
B. Indigenous Peoples (IP)

50. There are no Indigenous Peoples (IP) identified in the project area and as such no IPs are affected by the project activity. As there are no identified indigenous people/ethnic minorities residing in the vicinity of the proposed project area, the project has thus been classified as “Category C” for Indigenous People.

V. INSTITUTIONAL ARRANGEMENT

A. Institutional Arrangement and Responsibilities

51. To ensure timely and effective implementation of the project the executing and implementing agencies (EA/IA) must have instructional arrangement in place. The project has Water and Sanitation Division, Department of Engineering Services, the Ministry of Works and Human Settlements (MOWHS) in Thimphu as the EA. A Project Management Unit (PMU) is established within the Department of Engineering Services (Water and Sanitation), MOWHS, headed by a Project Director for overall project management. The PMU will be responsible for planning, implementation, monitoring and supervision, and coordination of overall project activities. The PIUs will be established at two dzongkhags and one at the thromde level and will be directly under the PMU and will be responsible for the daily coordination and execution of the project activities. The Dzongkhag Administration, Wangduephodrang is the implementing agency (IA).

Figure 8: Institutional Arrangement

52. **Roles and Responsibilities of the PMU in Social Safeguards.** The PMU will work closely with the PIUs in implementing the social safeguards requirements of project implementation. The PMU will be headed by a Project Director (PD); the PMU will be staffed with at least one social safeguards officer who will be responsible for resettlement, safeguard implementation and other social issues in compliance with ADB SPS, 2009 and national laws. The PMU will be supported by PIUs and Project Management and Supervision Consultants (PMSC).

53. **Tasks of Social Safeguard Officer at PMU Level.** Key social safeguard tasks and responsibilities at the PMU level are as follows:

- (i) ensure projects conform to the agreed project selection criteria for the project;
- (ii) review and finalize project involuntary resettlement and indigenous people category;
- (iii) oversee preparation of resettlement plans/Due Diligence Report (DDRs); confirm existing resettlement plans/DDRs are updated based on detailed designs, and that new project resettlement plans/DDRs are prepared in compliance with ADB SPS 2009 and policies, regulations of RGOB for the project;
- (iv) responsible for issuing the public notice to acquire a particular land/property (if required) for the project along with project information/details as well as the project cut-off-date;
- (v) ensure that resettlement plans/DDRs are included in bidding documents and civil works contracts;

- (vi) ensure that water supply safety plan recommended by the Water Regulation of Bhutan 2014 and World Health Organization (WHO) are included in bidding documents and civil works contracts;
- (vii) provide oversight on social safeguard management aspects of projects and ensure resettlement plans and impact avoidance measures outlined in the resettlement plan/environmental management plan/DDR are implemented by PIU and contractors;
- (viii) ensure and monitor the provision in the contract to include the vulnerable people to be the beneficiaries of the facilities constructed under the Project;
- (ix) facilitate and ensure compliance with all government rules and regulations regarding project implementation. Obtain No Objection Certificates, land ownership and transfer details etc. for each site, as relevant and include the same in the respective social safeguard documents for the package;
- (x) supervise and guide the PIUs to properly carry out the social safeguard monitoring (resettlement plan);
- (xi) review, monitor, and evaluate the effectiveness with which the resettlement plans/provisions of DDRs are implemented, and recommend corrective actions to be taken as necessary;
- (xii) consolidate monthly social safeguard and gender monitoring reports from PIUs/PMSCs and submit semi-annual social safeguard monitoring reports (SSMR) to ADB;
- (xiii) ensure timely disclosure of final resettlement plans/DDR in locations and form accessible to the public and affected persons;
- (xiv) address any grievances brought about through the grievance redress mechanism in a timely manner;
- (xv) oversee training needs assessment of affected persons and vulnerable persons by PIUs and PMSC, coordinate training activities and convergence with livelihood programs of the government, in case any permanent and significant impacts to livelihood of affected persons or impacts to vulnerable are identified;
- (xvi) identify training needs and coordinate training activities for the PIUs/contractors/project consultants for capacity building to implement the Resettlement Plans/DDR, and GRM; and
- (xvii) coordinate public awareness campaigns by the PIUs including resettlement provisions with the help of print and electronic media.

54. Roles and Responsibilities of the Project Implementation Unit (PIU) in Social Safeguards. The PIUs will be responsible for the day-to-day activities of project implementation in the field and will have direct supervision to the contractors at project sites. Each PIU will be headed by Project Manager of District Engineer/ Chef Engineer rank and the social safeguard focal person will oversee the safeguards implementation at PIU level, coordinate public consultations, information disclosure, regulatory clearances and approvals, resettlement plan implementation and grievance redressal. The PIU will work in close coordination with Project Management and Supervision Consultants (PMSC).

55. Social Safeguards Tasks at PIU Level. The key social safeguard role and tasks of dzongkhags and thromde level PIU will be:

- (i) Provide field data to fill up involuntary resettlement / indigenous peoples' impact checklist and classify the project;
- (ii) Conduct census and socio-economic surveys, detailed measurement surveys, and verification surveys of affected persons along with PMSC before start of civil

- construction work for DBO contract and prior to award of contract for item-wise contract;
- (iii) Conduct consultations with affected persons, prepare list of affected persons, provide all data required to prepare/update resettlement plans / DDRs with the assistance of Social Expert of PMSC.
 - (iv) Ensure updated information is submitted to PIU for preparation/updating of safeguards and monitoring documents with PMSC and Contractor's support;
 - (v) Inform affected persons about tentative schedule of construction work, entitlement matrix and compensation packages against different categories of loss, and cut-off date;
 - (vi) Coordinate valuation of assets, such as land, trees of various species, etc. based on proper due diligence and assessment, prepare compensation packages (if applicable for the particular project);
 - (vii) Coordinate, supervise and monitor disbursement of compensation;
 - (viii) Obtaining no objection certificates (NOCs), for implementation of project components;
 - (ix) Support to PMU in preparing/updating RPs//DDR;
 - (x) Oversee day-to-day implementation of impact avoidance and mitigation measures in resettlement plans /DDR/ and EMP by contractors, including compliance with all government rules and regulations particularly health and safety, take necessary action for obtaining ROW;
 - (xi) Oversee maintenance of data for monitoring, by consultants and contractors;
 - (xii) Implement corrective actions when necessary to ensure no adverse social impacts;
 - (xiii) Submit quarterly social monitoring reports to PMU;
 - (xiv) Conduct continuous public consultation and awareness with affected persons and stakeholders;
 - (xv) Set up GRM at site/PIU level and ensure it is fully functional. Address any grievances brought about through the grievance redress mechanism in a timely manner;
 - (xvi) Ensure that induction course for the training of contractors is conducted regularly. Prepare contractors (with consultants' support) on resettlement plans/ DDR implementation, social safeguard monitoring requirements related to mitigation measures, health and safety and on taking immediate action to remedy unexpected adverse impacts or ineffective mitigation measures found during the course of implementation;
 - (xvii) Liaise with the District Administration and other concerned departments for project implementation as and when required;
 - (xviii) Supervise the work of all consultants and contractors at dzongkhags and thromde level;
 - (xix) Undertake day-to-day implementation of final resettlement plans, where applicable;
 - (xx) Provide field level information required to prepare periodic safeguard monitoring reports in a format acceptable to ADB and quarterly progress reports and semi-annual social monitoring report (SSMR) in the format provided in PAM; and
 - (xxi) Extend support in carrying out awareness campaigns in project towns.

56. Roles and Responsibilities of the Project Management and Supervision Consultants (PMSC) in Social Safeguards. The PMU and the PIUs will be supported by a Project Management and Supervision Consultant (PMSC) to supervise, monitor and oversee project implementation, support on policy reform related issues and compliance of all the reporting

requirements of RGOB, other statutory regulatory bodies and ADB in line with SPS-2009. Social Expert of PMSC will assist PIUs in implementation of resettlement plans, mitigations as suggested in DDRs. The Expert is responsible for updating of resettlement plan/due diligence report, public consultation and disclosure, assessment of entitlement and computation of compensation.

57. Social Safeguards Tasks of PMSC. The key tasks of PMSC pertaining to social safeguards are as follows:

- (i) To support PIU and PMU to screen and categorize project components;
- (ii) Ensure the contractors comply with the agreed social safeguards policies, resettlement plans, and due diligence reports on social safeguards for the project;
- (iii) Prepare any additional draft resettlement plans, update the existing resettlement plan (based on revalidation and DMS, before start of construction work), due diligence reports and prepare any new safeguard documents as and when required;
- (iv) Assist the PIUs in the implementation of final resettlement plans;
- (v) Prepare periodic safeguard monitoring reports as per the format acceptable to ADB as per formats provided in PAM; and
- (vi) Facilitate and support PIUs to conduct awareness program on safeguards, grievance redress, information disclosures related to cut-off-date, entitlements.

58. Civil Works Contractor: The resettlement plans /DDR are to be included in bidding and contract documents and verified by the PIUs and PMU. The resettlement plan is made binding i.e., mandatory on contractor as part of the employer's requirement in the bid and contract documents. The contractor shall comply with social safeguard provisions as outlined in the resettlement plan/EMP during civil works and operation and maintenance, who will also have the responsibility for communication with the public under the guidance of PMU/PIUs and grievance registration. Contractors are to carry out all mitigation and monitoring measures outlined in their contract.

59. The Contractor shall comply with (i) all applicable labour laws and core labour standards on (a) prohibition of child labour as defined in national legislation for construction and maintenance activities;(b) equal pay for equal work of equal value regardless of gender, ethnicity; and (c) elimination of forced labour; and with (ii) the requirement to disseminate information on COVID-19 safety protocols, sexually transmitted diseases, including HIV/AIDS, to employees and local communities surrounding the project sites. The key responsibilities of the Contractor on social compliance are as follows:

- (i) Compliance with all government rules and regulations particularly health and safety, take necessary action for obtaining ROW through consultative meetings and dissemination of information with community forest groups and obtaining permissions prior to felling of trees, movement of vehicles etc.
- (ii) Implement corrective actions wherever necessary, to ensure no adverse social impacts are caused due to project implementation;
- (iii) Submit monthly progress reports to PIU;
- (iv) Conduct meaningful public consultation and awareness where necessary regarding construction work schedule and progress;
- (v) Support PIU in setting up GRM at field/site level and ensure it is fully functional. Address any grievances brought about through the grievance redress mechanism in a timely manner;
- (vi) Make sure that that induction course for the training of contractors is conducted regularly and that the contract staff are aware about social

- safeguards/resettlement plans/DDR social safeguard monitoring requirements related to mitigation measures, health and safety and on taking immediate action to remedy unexpected adverse impacts or ineffective mitigation measures found during the course of implementation;
- (vii) Establish working rapport and liaison with the District Administration and line departments as and when required;
 - (viii) Provide support in carrying out awareness campaigns in project level; and,
 - (ix) Ensure COVID-19 safety protocols are regularly monitored and followed at each of the construction sites.

B. Social Safeguards Implementation

60. The PIUs will be responsible for implementation of the resettlement plans and the PMU for monitoring of the resettlement plans. The PIU will undertake surveys and record observations throughout the construction period to ensure that safeguards and mitigation measures are provided as intended. The PMU through the PIUs will arrange for delivery of entitlements to affected persons, implementation and monitoring of safeguards compliance activities, public relations activities, gender mainstreaming activities and community participation activities. It will also arrange for obtaining statutory clearances and obtaining no objection certificates from government agencies and/or other entities, if required. It will also coordinate for obtaining ROW clearances with related state and national agencies. The PMSC Social Safeguard Expert will supervise data collection for resettlement plan / due diligence report updating, preparation and implementation and prepare progress reports with respect to resettlement plan implementation. They will record involuntary resettlement impacts at field level during implementation, need to update resettlement plans/DDRs and need to prepare resettlement plans where earlier no impacts were envisaged and only DDRs prepared.

61. The PIU will finalize entitlements in consultation with affected persons, which will be examined and approved by the PMU. The PIU with the support of PMSC will arrange for delivery of entitlements to affected persons. Organizational procedures/institutional roles and responsibilities for resettlement plan implementation and steps and/or activities involved in delivery of entitlements are described in entitlement matrix.

62. The PIU will assist the PMU in implementing and monitoring the resettlement plan (duly approved by PMU and reviewed/cleared by ADB prior to implementation). PMU and PIU staff capacity needs to be built to ensure that they are fully conversant with public awareness generation activities, consultations and field surveys and an understanding of data entry and quality control.

Table 10: Institutional Roles and Responsibilities

Activities	Agency Responsible
Project Initiation Stage	
Finalization of sites/alignments for project (on ground)	PMU/PIUs
Meetings at community/household level with beneficiaries and community forest groups	PIU/Consultants
Due Diligence Report Preparation/ Updating Stage	
Conducting consultations, discussions/meetings/workshops	PIU/PMU
Implementation Stage	
Continued consultations and Grievances Redressal, if required	PMU/PIU/GRC

FGD= focus group discussion; GRC = Grievance Redress Committee; PMU = project management unit; PMSC= project implementation and supervision consultants; PIU= project implementation unit.

VI. GRIEVANCE REDRESS MECHANISM

63. The project is required to have a grievance redress mechanism (GRM) to provide a platform for people who are affected by the project to submit their grievances and a mechanism for the project to resolve a grievance received from affected communities. This GRM is applicable if there are unanticipated impacts during the project implementation and construction phase. A Grievance Redressal Committee (GRC) to be constituted at the PIU (dzongkhag administration) level as well as central/PMU (MOWHS) level.

64. The Grievance Redress Mechanism (GRM) follows a tiered system, starting at Level 1, Level 2 and Level 3 (the GRC level at PMU) to resolve any grievances or complaints. The GRM structure is shown in figure 9. The GRM process will ensure that grievances and complaints regarding land acquisition, compensation, and resettlement, or other social and environmental issues will be addressed in a timely and satisfactory manner. People will be made aware of their rights and the detailed procedures for the filing of grievances. The PIU will undertake outreach activities to make people aware of the GRM which will also be uploaded to the MOWHS website both in English and Dzongkha. GRM structure and the name and contact details of the focal persons will also be displayed on notice boards at the project sites, PMU and PIU.

65. **Level 1. The first level of Grievance Redress Mechanism.** Aggrieved persons may first approach the Contractor's site representative and/or project manager in case of complaints related to construction-related nuisances. The complaint must be recorded in the site register and the Contractor should provide a resolution to the complaint within 2-5 days. In case, the complaint is not resolved at this level, the aggrieved persons can then file a complaint with the PIU. Aggrieved persons are entitled to lodge complaints regarding any aspect of the land acquisition, entitlements, benefits, or rates of payment as well as any project-related social or environmental issues. Complaints can be made verbally or in written form. All complaints must be recorded by the PIU, including actions taken to resolve the complaint. Complaints, their nature, and resolution should be mentioned in the quarterly progress reports.

66. **Level 2. The second level of Grievance Redress Mechanism.** At this level, the Project Manager, PIU, will coordinate with the GRC. GRC should be in place before project implementation. This committee shall comprise of: (i) Dzongdag (district administrator) as the Chairman; (ii) District engineer/chief engineer (PIU project managers) as member secretary; (iii) project engineer (PIU Project Engineer); (iv) district planning officer; (v) district legal officer; (vi) district environmental officer; (vii) district land record officer, (viii) town representatives (elected); and (ix) GESI focal person of PIUs. The aggrieved person who filed the complaint (or representative/s from the affected household/s) will be called to present his or her case and deliberation on the case will be done through proper hearing or mediation. It will be the responsibility of the dzongkhag to resolve the issue within 15 days from the date the complaint is received. Minutes of the meeting and resolution will be recorded for purposes of project monitoring.

67. If the complaint is unresolved at this level, the PMU, PIU, or the District Administrator will inform the aggrieved person accordingly and assist them in elevating the complaint to the PMU or Central Grievance Committee.

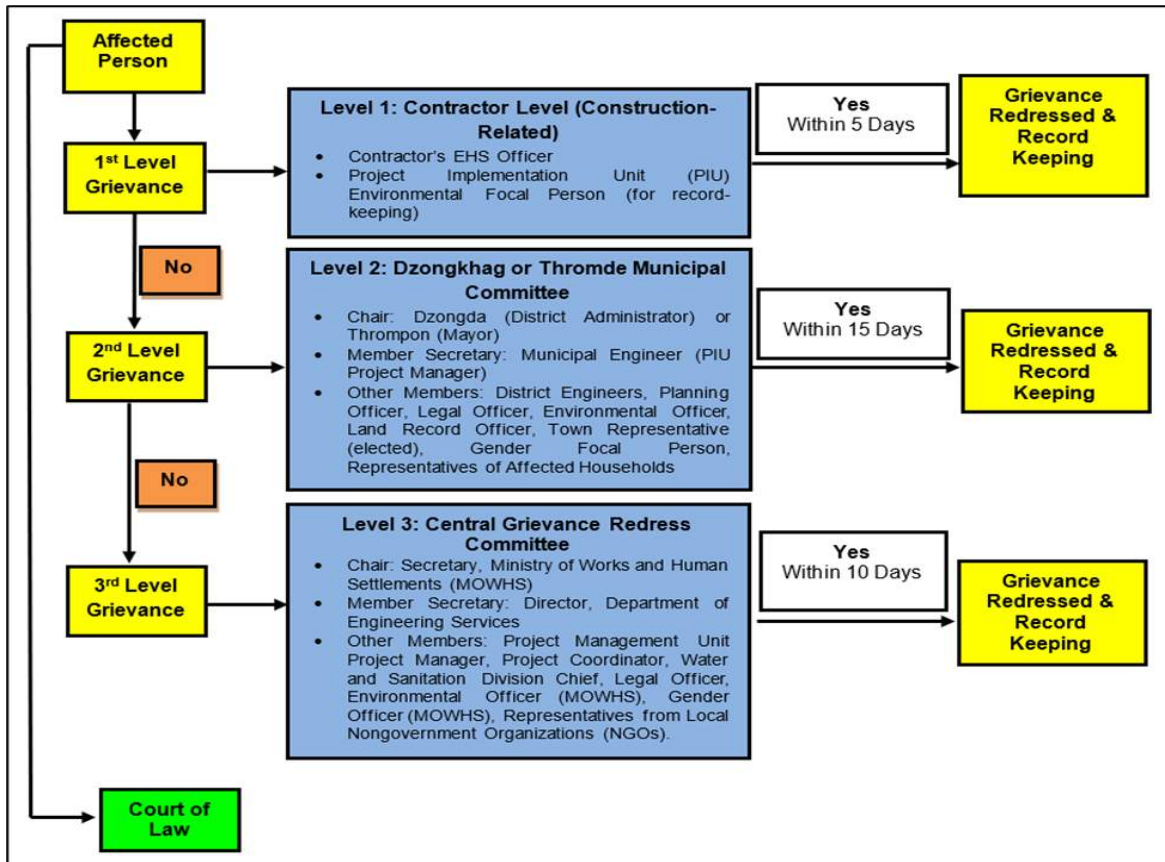
68. **Level 3. The third level of Grievance Redress Mechanism.** Grievances not redressed at the Dzongkhag committee within 15 days will be brought to the Central Grievance Redress Committee at the MOWHS level. The Central Grievance Redress Committee will comprise of: (i) Secretary, MOWHS (Chairman); (ii) Director, DES (Member secretary); (iii) Project manager,

PMU; (iv) Project coordinator, PMU; (v) legal officer, MOWHS; (vii) Focal engineer for the respective district; (viii) and gender officer (MOWHS). It will be the responsibility of the central grievance committee to resolve the issue within 10 days from the date the complaint is received. An aggrieved person can at any point of time take the complaint/grievance to an appropriate court of law. The court will have the final authority on the case. Aggrieved persons may seek recourse through the legal system at any stage of the GRM process.

69. The GRM notwithstanding, an aggrieved person shall have access to the country's legal system at any stage. This can run parallel to accessing the GRM and is not dependent on the negative outcome of the GRM.

70. **ADB Accountability Mechanism.** If the established GRM is not able to resolve the issue, the aggrieved persons/communities can also use the ADB Accountability Mechanism by directly contacting (in writing) the Complaint Receiving Officer at ADB headquarters. Before submitting a complaint to the Accountability Mechanism, it is recommended that affected people make an effort in good faith to resolve their problems by working with the concerned ADB operations department (in this case, the Bhutan Resident Mission (BHRM)). Only after doing that, and if they are still dissatisfied, do they approach the Accountability Mechanism. The complaint can be submitted in any of the official languages of ADB's Developing Member Countries. The ADB Accountability Mechanism information will be included in the Project Information Document to be distributed to the affected communities, as part of the project GRM. The sample grievance registration format is attached in Appendix 10.

Figure 9: Grievance Redress Mechanism



71. The timeframes within which to resolve the issues may be adjusted accordingly during extraordinary circumstances, such as lockdowns or travel restrictions imposed by local or national

governments due to COVID-19. The adjustment will depend on the period of interruption during these events and will be decided upon by the PMU and PIU.

72. **Information Dissemination Methods about GRM.** Periodic community meetings will be held by PIUs with affected communities to understand their concerns and help them through the process of grievance redress (including translation from local dialect/language, recording and registering grievances of non-literate affected persons and explaining the process of grievance redress) if required. The above Grievance Redress Process will be discussed with the different stakeholders during stakeholder consultation meetings. These meetings will be held with affected persons and community members (beneficiaries) and the concerned local government representatives where civil works are proposed. The process and timelines for grievance redress and contact details of the persons responsible for grievance redress will be shared in the stakeholder meetings. Action taken in respect of all complaints will be communicated to the complainant by letter, over phone or e-mail or text messaging.

73. **Consultation Arrangements for GRM.** This will include group meetings and discussions with affected persons, to be announced in advance and conducted at the time of day agreed on with affected persons and conducted to address general/common grievances; and if required with the Environment/Social Specialist of PMU/PIU for one-on-one consultations. Non-literate affected persons/vulnerable affected persons will be assisted to understand the grievance redress process, at the site office of the Contractor and at PIU level, the official appointed to receive grievances will assist the non-literate affected persons to register complaints and follow-up with actions at different stages in the process.

74. **Record Keeping.** Records of all grievances received, including contact details of complainant, date of receiving complaint/grievance, nature of grievance, agreed actions and measures, the date these were affected, and outcome will be kept by PIU. The number of grievances recorded and resolved, and the outcomes will be displayed/disclosed in the PIU office, and on the website of PMU, as well as reported in the semi-annual social and environmental monitoring reports to be submitted to ADB. The Environmental Officer and the Social Safeguard Officer will be responsible for maintaining the grievance record.

75. **Periodic Review and Documentation of Lessons Learned.** The PMU, and PIUs, supported by Environment and Social Safeguards Specialist consultants (if included under the project) will periodically review the functioning of the GRM and record information on the effectiveness of the mechanism, especially on the PIU's ability to prevent and address grievances.

76. **Costs.** All costs involved in resolving the complaints (meetings, consultations, communication, and reporting/information dissemination) will be borne by the PMU and/or PIUs.

VII. CONCLUSION AND NEXT STEPS

A. Conclusion

77. No involuntary resettlement impacts are envisaged at any of the bulk water supply project components, as all the proposed sites are confined to vacant, unused government lands or right of way of government roads. Some sections of pipe will also be aligned through community forests (managed by community group members and land of the forest belongs to government) who have issued a NOC (appendix 9) for providing access to the community forest land for routing of transmission main pipeline. Besides, there are no Indigenous People identified within the project

areas. Therefore, the project is categorized as Category C for involuntary resettlement and indigenous people as per ADB SPS 2009 (for bulk water supply components).

78. Important findings of the study in connection to social safeguard issues are:

- (i) The transmission mains from Hetsotsamchu water source to the proposed delivery point at Tingna will be aligned across mostly through government land and across the land forest land registered in the names of three community forestry management groups. The NOC from the forestry user groups has been obtained and is presented as Appendices.
- (ii) The preliminary assessment based on review of maps and field visit shows that no private land or assets is expected to be impacted. All project components will be constructed on government land.
- (iii) There are no impacts on structures, shops, fruit trees, or any other establishments on the identified lands.

B. Next Steps

79. The DDR will be further updated by the PIU/PMU, DES, MOWHS in case of any alterations in design or change in sites and submitted to the ADB for approval before implementation of works and the updated DDR will be verified by the Project team. This will be especially pertinent on finalization of the irrigation water and drinking water distribution network designs. The Project Manager from PIU/PMU, DES, MOWHS will carry out internal monitoring through the PIU and PMU on (i) GRM establishment and complaints/grievance redressed and (ii) unanticipated Involuntary Resettlement impacts during project implementation if not included in this DDR. It is critical to ensure that the construction works are completed as per schedule to minimize disturbances to the communities residing near the project sites.

80. The PMU will obtain no objection certificate (NOC) from the concerned departments, Royal Government of Bhutan for construction of intake structures, pre-sedimentation chlorination tank, delivery chambers, wash-out chambers and transmission mains. The NOC will be updated to the DDR.

81. On finalization of the detailed design for laying of the irrigation distribution network, drinking water distribution network and break-pressure tanks a separate involuntary resettlement impact assessment will be undertaken; if no impacts are identified, then this DDR will be updated with details of land ownership. However, if impacts are identified then a separate Resettlement Plan will be prepared for the water supply distribution networks and irrigation channels up to farm level.

Appendix 1: Persons consulted at MOWHS and Wangdue Dzongkhag

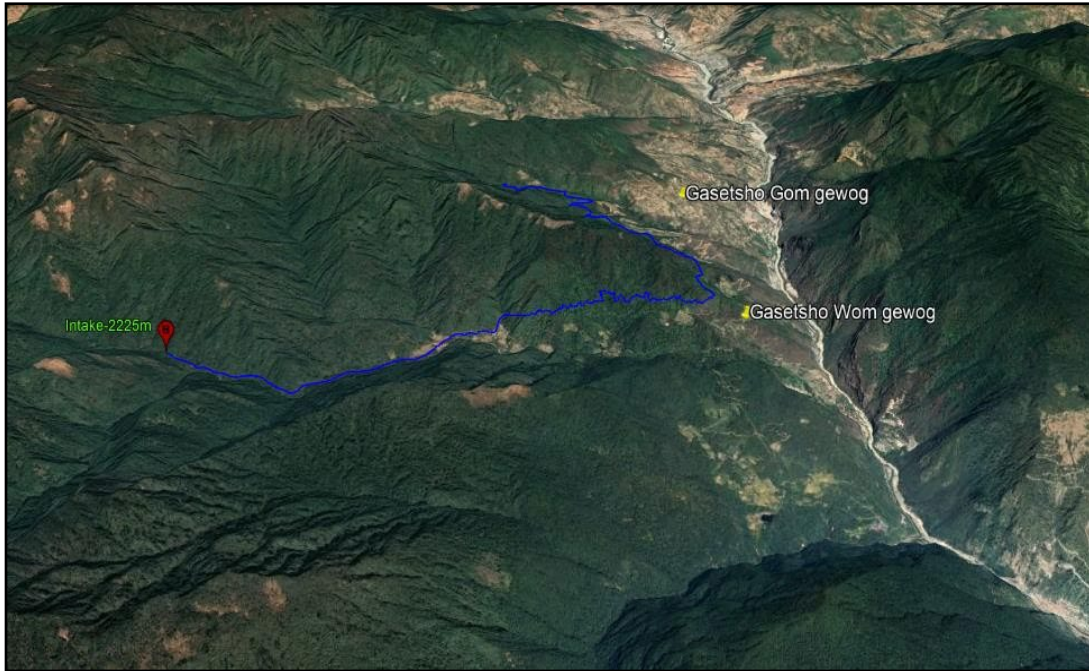
Persons consulted at MOWHS, Thimphu

Name	Designation	Remarks
Ms. Dechen Yangden	Chief Engineer	WSD, MOWHS
Ms. Tshering Chhoden	Executive Engineer	WSD, MOWHS
Mr. Mahesh Pradhan	Component 2 Manager	DES, MOWHS
Mr. Kharka Bahadur Rana	Executive Engineer	WSD, MOWHS
Mr. Tshering Dhendup	Executive Engineer. Project Manager	WSD, MOWHS
Mr. Rajesh Pradhan	Social Safeguards Specialist	DMSC, MOWHS

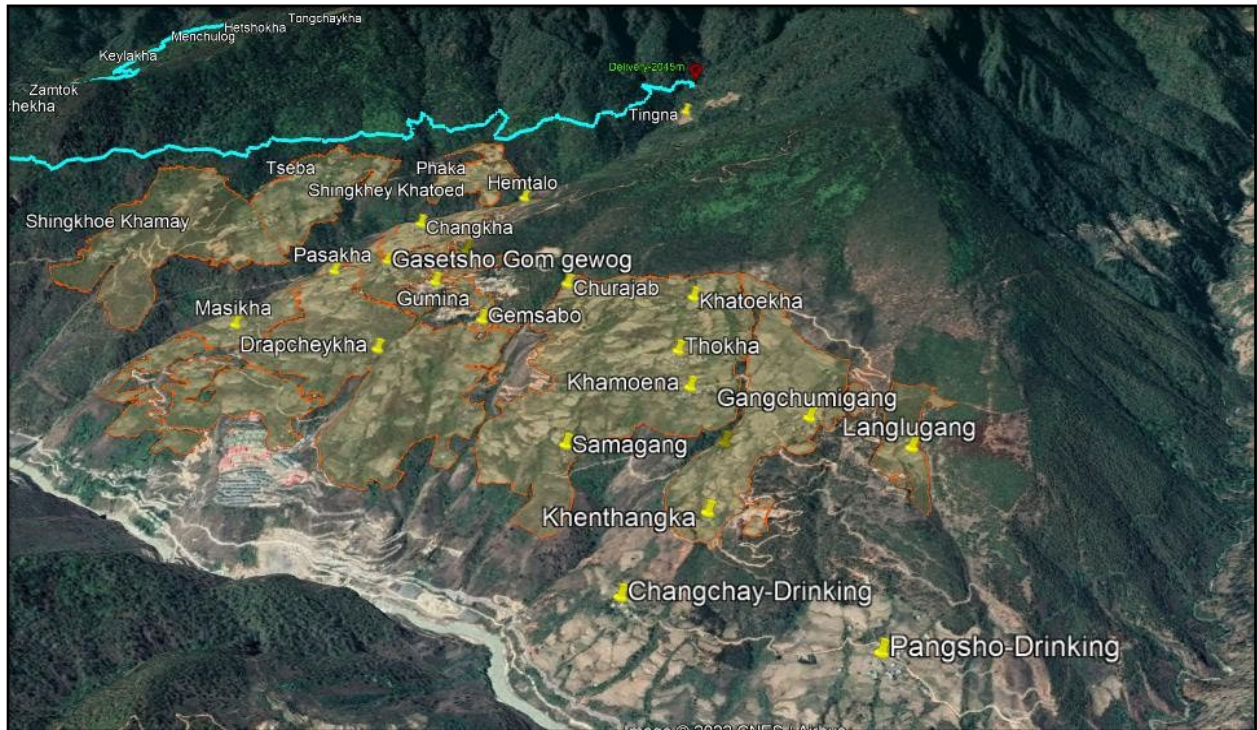
Persons consulted at Wangdue Dzongkhag

Dasho Chimi Dorji	Dzongdag	Wangdue Dzongkhag
Dasho Kinzang Dorji	Dzongrab	Wangdue Dzongkhag
Mr. Tashi N. Sherpa	Executive Engineer	Wangdue Dzongkhag
Mr. Ugyen Wangchuk	Dzongkhag Env. Officer	Wangdue Dzongkhag
Mr. Sangay Norbu	Dy. CFO	Wangdue Dzongkhag
Mr. Tshering Dhendup	Executive Engineer	Wangdue Dzongkhag
Mr. Jigme Dorji	Sur. Planning Officer	Wangdue Dzongkhag
Mr. Domzang	Asst. DAO	Wangdue Dzongkhag

Appendix 2: The Google Earth Map of Hetsotsamchu Integrated Drinking Water and Irrigation (22 km)



Appendix 3: The Google Earth Map of Villages having command areas under Gasetsho Gom gewog for irrigation from the Hetsotsamchu scheme



Google earth map showing command areas in villages under Gasetsho Wom gewog

Appendix 4: The Google Earth Map of Villages having command areas under Gasetsho Gom gewog for irrigation from the Hetshotsamchu scheme



Appendix 5: Certification from Dzongkhag Administration on Government land Construction of Project Components



ལྷན་

ཇོང་མག་བདག་ཁྱེད་ དབང་འདུས་མོང་རྩེ།
DZONGKHAG ADMINISTRATION
WANGDUE PHODRANG



DAW/DES-42/2022-2023/ 265

Date: 27/07/2022

TO WHOM IT MAY CONCERN

Under the Water Flagship Project an Integrated Drinking Water and Irrigation Scheme of a total length of 22 km is being planned for construction to benefit villages under Gasetsho Gom and Gasetsho Wom gewog. The project will be financed by the Asian Development Bank.

This is to certify that all project structures (see list attached) to be constructed will be located on government owned land. Wangduephodrang Dzongkhag Administration therefore has no objection to the project components being constructed on government land since the project is being developed for the benefit of the public of the two gewogs Gasetsho Gom and Gasetsho Wom gewog of Wangduephodrang Dzongkhag.



(Sonam Jamtsho)

DZONGDAG

Copy to:

1. The Director, Department of Engineering Services, Ministry of Works and Human Settlement, Thimphu, for kind information.
2. Chief Dzongkhag Agriculture Officer, DAW, for kind information.
3. Dzongkhag Planning Officer, DAW for kind information.
4. Project Management Unit, water sanitation and Division, Department of Engineering Services MoWHS, Thimphu for kind information.
5. Gup, Gewog Administration, Gasetshogom, Gasetshowom, for kind information.

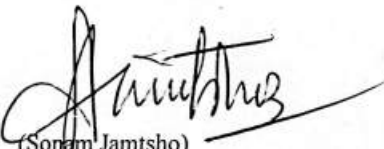
Appendix 6: Certification from District Administration Mentioning that the Proposed Project Components will not Impact Ancestral Domain, Religious Place, Graveyard or Any Other Place of Importance

 ལྷ་དབང་ལྷན་འབྲུག་གཞུང་།
རྫོང་ཁག་བདག་སྐྱོང་། དབང་འདུས་ལོ་བྱང་།
ROYAL GOVERNMENT OF BHUTAN
DZONGKHAG ADMINISTRATION
Wangduephodrang
Engineering Sector 

DAW/DES-42/2022-2023/ 196 Date: 07/07/2022

To Whom It May Concerned .

It is to certify that alignment of survey of Integrated Drinking and Irrigation Water Project from Hetshotshamchu under Gasetshowom Gewog to Tingalum under Gasetshogom will have no affect to any of ancestral religious like stupa, temple, graveyard, lake, Ney, pedestrian, local important places etc. Further, the Dzongkhag administration will ensure that there will not be any adverse negative impact to the important places and settlement due to this project implementation.


(Sonam Jamtsho)
DZONGDAG
Copy to :

1. The Director, Department of Engineering Services, Ministry of Works and Human Settlement, Thimphu, for kind information
2. Chief Dzongkhag Agriculture Officer, DAW, for information
3. Dzongkhag Planning Officer, DAW, for information
4. Project Management Unit, Water Sanitation and Division, Department of Engineering Services, MoWHS, Thimphu, for information.
5. Mr.Tashi Norbu Sherpa, DAW, for information
6. Mr. Singay Dorji, Site Engineer, DAW, for information
7. Gup,Gewog Administration, Gasetshogom, Gasetshowm, for information

Appendix 7: Summary of Minutes of Consultation Meetings Conducted

Venue: Dzongkhag, Wangduephodrang

Date: 2 June, 2022

Participants: See participant list

Topic	Discussion summary
Introduction	<ul style="list-style-type: none"> • Welcome and vote of thanks by the Gup of Gasetsho Wom to the participants. He says that the representatives from the chiwogs have been invited to share their views at the meeting. • Mangiap expressed great gratitude to ADB for supporting the project and taking the time to walk to the intake site.
Clarification was sought on whether the issue was lack of water or difficulties in water management	<ul style="list-style-type: none"> • It is not that there is no water, but the single source is divided into four channels • The rainfall is irregular (climate change) and not on time as in the past- delay in rainfall • The water is not adequate and not equitably shared because it is based on old traditional systems. Therefore, there is a need to review the existing water sharing system which is not very efficient or equitable. • Water associations differ from village to village.
Challenges being faced in the community	<ul style="list-style-type: none"> • The villages do have a command source and intake sites and most houses also have individual small sources • In earlier times, there was a water committee, but this faced difficulties in sustaining the irrigation channels. They are still working as volunteers to ensure water supply to the villages • 50% of the land is being left fallow and most of this belongs to the poorer community due to lack of water. • During the 4-5 Bhutanese months- this leads to lots of fighting between the community for water. Even after social conflicts and fighting for water. • Without adequate water- the yield is also affected and highly reduced compared to other villages in Punakha and Paro <p>Drinking water</p> <ul style="list-style-type: none"> • Individual houses have various water sources that are tapped but this is a problem- more so when it does not rain. • The water taps outside the houses are not functional as the water sources are not reliable • Currently water is stored in water tanks or ponds by different houses • The establishment of the schools, the gewog office, the Basic Health Unit and the Renewable Natural Resource (RNR) offices have added to the demand for water resulting in the water shortage
Existing system	<ul style="list-style-type: none"> • Water rotation happens in a 24-hour period and each farmer gets their turn in 24 hours, so a farmer spends hours to go check the water source and have to keep waiting for their turn and ensure that water is not diverted elsewhere. Sometimes, the water does

	<p>not adequately cover all the plots of land in the 24 hours.</p> <ul style="list-style-type: none"> • Increasingly, more people are buying imported rice rather than being able to grow paddy • When land is sold, the water right is not necessarily sold to the buyer so that results in water shortage. • The existing water canals are both a combination of cemented canals and natural drains and not lined with lots of seepage • The community contractors are paid by the gewog to repair and maintain through annual budget provisioning (prioritized based on community needs)
Future plans	<ul style="list-style-type: none"> • Gup: Once the project is operational, the 2 gewogs in discussion must come up with a water association and in order to sustain that, tax or a form of payment should be collected from the community to pay the community/labor working for the community- to sustain this system. Not sure at this point whether this will be acceptable to the community yet, so this will be discussed within the community first.
Expectations	<ul style="list-style-type: none"> • The project will greatly benefit the 8 chiwogs and 2 gewogs. The community has very high expectations that they will become prosperous and economically developed once the project comes on board • Hope to strengthen the water association and further improve water management • Maintenance: Automation can be learnt by the community if given adequate training by mobilizing the youth from the community. It will take the community 1-1.5 years to learn, rather than have an outsider take care of the maintenance. • If water was available, all types of crops could actually grow due to the climatic conditions but cannot do so now. If they get adequate water, then they can hope to be self-sufficient as well as sell the produce (both cereals and fruit trees too) • Hope that this will encourage youth to come back to the village to become farmers • Also aspire to expand to livestock rearing • Want to replace the old traditional water sharing system with the Water Act. • Land right should be tied with the water right

Participant list- Meeting with the Community Representatives

Luca Di Mario (ADB)		
Gopalakrishna Bhat(ADB)		
Robert Rout (ADB)		
Miguel (ADB)		
Saughata (ADB)		
Soram An (ADB)		
Indra K. Chhetri (Lead)	Geological specialist	
Tshering Dendup	Executive Engineer	
Sigme Dorji	Sb. planning officer	
Donyang	ADAO	

Meeting for Water Flagship Program: ADB Pre-Fact/ Finding Mission on 02/06/2022(Integrated Drinking and Sanitation under Gasetshogom & Gasetshowom)

Sl.No	Name	Designation	Signature
01	Dakem Dorji	Chief Engineer Basochhi HEP	
02	Ugyen Wangchuk	DZO. EWO	
3	Sangay Wabgy	Dy. CFO	
4	Sangy K. Nepal	Consultant (ADB)	
5	Deki-P. Yonten	Consultant (ADB)	
6	Karma	Tshogpa	
7	Tshering Pemo	Member	
8	Yangka	"	
9.	Chador Nangay	Tshogpa	
10.	Pema Dorji	"	
11.	Kintey Dendup	"	
12.	Kintey Wangchuk	Mangmi	

Photos: Meetings with the Community Representatives



Appendix 8: Minutes of Consultation Meeting held on 4 June 2022 with Community Forest (CF) members

Participants:

1. Miguel Diangan, ADB International Environmental Consultant
2. Saroj K Nepal, ADB Social safeguards Consultant
3. Deki P Yonten, ADB Environmental Safeguards Consultant
4. Sonam Tshering, Mangmi
5. Pema Gyaltshen, Tsogpa
6. Dawa Gyeltshen, CF member
7. Dorji Gyeltshen, CF member
8. Tandin Tshering, CF member
9. Pemba Tshering, CF member
10. Namgay A, CF member
11. Namgay B, CF member
12. Kinley Tshoki, CF member
13. Sonam Tobgay, CF member
14. Sangay Tshering, CF member
15. Lhaden, CF member

Topic	Discussion
Introduction	<ul style="list-style-type: none"> • Introduction of the Participants and the ADB representatives
Background and Objectives of the Project and impact on CF	<ul style="list-style-type: none"> • Explanation on the Background and Objectives of the meeting and discussion on the alignment of the water transmission mains • It was explained that the exact distance of the CF traversedis not clear and that the Divisional Forest Office has been consulted to seek them advice on the length. • The project will share the revised updated alignment with the Divisional Forest Office and in turn seek their input to determine the distance through CF. • Representatives (Chairman, secretary and treasurers) from three Chiwogs attended the meeting along with other participants from Shingkhey Khatoe (includes Phaka) and Shingkhey Khamey, Tabchakha and Hetsokha • The total number of members within their CF is as follows; Shingkhey Khatoe (15) and Shingkhey Khamey (12), Tabchakha (7) and Hetsokha (12). • All the Community Forests are from within Gasetsho Wom gewog.

Compensation for trees felled	<ul style="list-style-type: none"> • In terms of compensation- If the forestry Department imposes compensation, then they should also be compensated. However, if the compensation is to be used for tree planting then once the alignment is cleared for the irrigation channel, there will be no room to replant new trees, so the community would not be able to use that fund to replant as is being done by the Forest Department. • Meeting agreed that they should keep felled trees and if compensatory afforestation is taken up by the project but not compulsory. Rather the community does not want to do the plantation because the maintenance requires a lot of work. • If the trees are given to the community for their own use, and the funds for replantation are from loan, the community does not desire it. However, if the funds are from grant money, they would like to seek some compensation for afforestation.
Discussion on the procedures for tree removal	<ul style="list-style-type: none"> • The community feels that the DOFPS has the marking hammer and receipt books are with the DOFPS. However, the CF is allowed to retain the trees after felling. • They CF follows the prescription and rules of Forestry and their own by-laws
Project impacts	<ul style="list-style-type: none"> • Though the project will impact the Community Forest, the communities will definitely benefit from the water project, so therefore, they have no objection to the project
Construction access	<ul style="list-style-type: none"> • The access that is required to create the trenches and carry the pipes should be blocked after the project and the community will insist that use of this will be restricted. The member informed that they will include this as a clause in their clearance document
Project affected households	<ul style="list-style-type: none"> • The community members identified Ms. Kinley Situ, from Hetsokha village as a potential Affected Person and shared her mobile number with the consultants for further follow up meetings and discussion
Grievance Redress Mechanism	<ul style="list-style-type: none"> • The consultants explained the GRM mechanism and informed the meeting on the process and explained how the community could address emerging impacts from the construction process
Potential impacts to the community	<ul style="list-style-type: none"> • The community said that care must be taken when working on the cliff above Tapchakha village and that the contractor must take care or boulders will fall on the village and canals when cliffs are being blasted. • Also, concern was expressed on identifying a muck dump site as the rains will wash all the excavated soil down slope onto the village if dumped carelessly. • It was agreed that both points would be included in the EMP and as a requirement for the contractor to follow up on.

No objection letter from the community	<ul style="list-style-type: none"> • A no objection was sought from the community to allow the transmission main to traverse through the Community Forest. The representatives were requested to discuss and seek the clearance from 80% of the CF members • The CF representatives said that since the project was going to be for the benefit of their community, they will secure not just the 80% but get the consensus of the entire community • The community representatives assured the meeting that within the week, they will inform all their CF members and send the consensus letter to the gewog for onward submission to the District and Project Management
--	--

LIST OF PARTICIPANTS FOR CONSULTATIONS, WFP, WANGDUE
FOCUS GROUP DISCUSSIONS (COMMUNITY FOREST MEMBERS) GASETSHO WONG WANGDUE

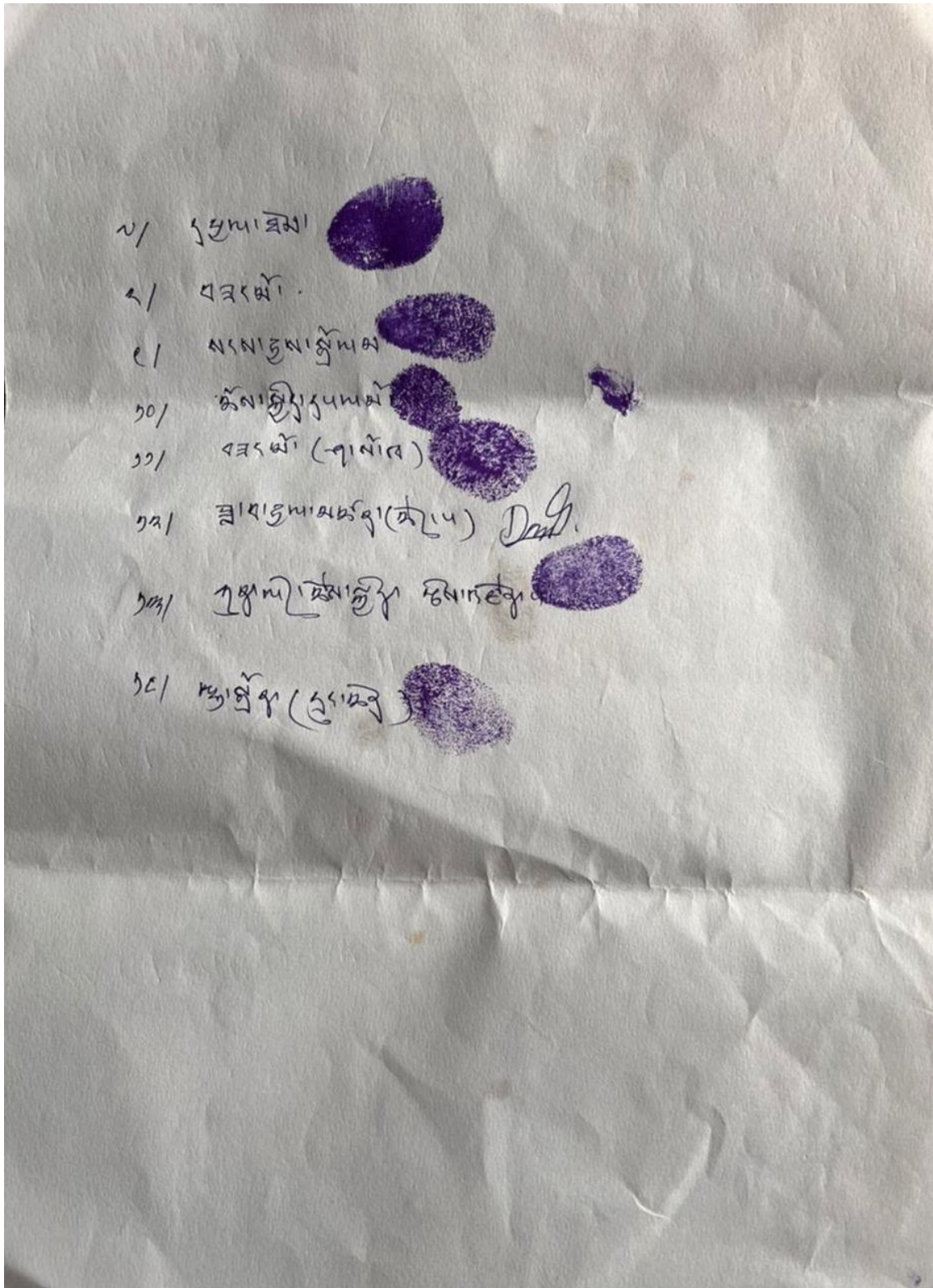
No	Name	Contact No.	Male/Female	Organization	Designation	Signature
1	Miguel Diangan	1839178889288	Male	ADB	Consultant	
2	Suroj K Nepal	17624568	Male	ADB	Consultant	
3	Deki Yonten	77110028	Female	ADPS	Consultant	
4	Sonam Tshering	77618120	Male	TALCHOKHA ADB	Mangrai	
5	Pema Gyeltshen	17733492	Male	SUNGAPYI ADB	Tsugpa	
6	Dawa Gyeltshen	77402563	Male	HETSHOKHA ADB	CF member	
7	Dorji Gyeltshen	77423449	Male	SUNGAPYI ADB	CF member	
8	Tandin Tshering	17582603	Male	TALCHOKHA ADB	CF member	
9	Pemba Tshering	17456339	Male	TALCHOKHA ADB	CF member	
10	Nangay A	17677092	Male	TALCHOKHA ADB	CF member	
11	Nangay B	17737003	Male	TALCHOKHA ADB	CF member	
12	Kinley Tshuki	77314522	Female	HETSHOKHA ADB	CF member	
13	Sonam Tobgay	17706390	Male	SUNGAPYI ADB	CF member	
14	Sangay Tshering	77640984	Male	HETSHOKHA	CF member	
15	Madan	77421453	Female	HETSHOKHA	CF member	

Date: 03/06/2022

Place: GASETSHO WONG WANGDUE
GEWOG CENTRE Pg.1

Photographs of consultations with Community Forest Members





୧/ ମୁଖ୍ୟାବଳୀ

୨/ ସରକାରୀ

୩/ ନବନିର୍ମାଣ

୪/ ଉନ୍ନତ ମାନ

୫/ ସରକାରୀ (ନିର୍ଦ୍ଦେଶ)

୬/ ସ୍ୱାସ୍ଥ୍ୟାବଳୀ (କେନ୍ଦ୍ର) *Don't*

୭/ ମୁଖ୍ୟାବଳୀ ଉନ୍ନତ ମାନ

୮/ ଉନ୍ନତ ମାନ (କେନ୍ଦ୍ର)

Translation of Agreement (No Objection Letter) submitted by Community Forestry User Groups

To
The Gewog Chair
Gasey Tsowom Gewog
Wangdue Phodrang Dzongkhag

With the utmost respect and kind consideration, we, the members of Taabchakhar Draktsen community forest under the ambit of Gasey Tsowom, Wangdue district, would like to submit the approval for the water canal installation for agriculture farming. Both upper and lower Gasey Tsowom gewog's people (individually) know the impacts of canal construction within their community forest, leading to the felling of trees. However, people of the gewog understood the project's actual benefits after the construction phase and agreed to proceed with the work they have no objections. However,, the felled trees from the community forest after the commencement of work should benefit members only. Nobody shall be permitted to handle those felled trees, irrespective of community forest members.

For vehicular movement prior permission should be sought. While handling the construction work, all matters related to boulders and debris should be well-taken care of. The work should be appropriately mitigated for the safety of houses, people and cattle. Besides, the dug soil must be transported somewhere where there is less risk to society.

Consequently, we are requesting all stakeholders (gewog's chair, gewog administration and all relevant ministries) to stick to the previous challenges and matters while endorsement of the canal works to solve the issues of the community.

Thanking you

Date; 14/06/2022

Signed:

Gewog Chair (Namgyal)
Accountant (Namgyal)
Secretary (Pempa Tshering)
Chador Lham
Namgyal Dorji
Dorji Wangchuk
Pema Zangmo

To
Environment officer

We want to submit our humble request from the people of GasenyTsowom Gewog, falling under Haytshokha chiwog. The water canal construction project falls within the estimation of our community forest, and therefore, the indispensable need of water for everyone (people of Haytshokha Chiwog) has approved the consent of the offering project without any complaints in future. However, after installing agriculture canal activities, the road should be sealed and closed to any access to vehicles so that the road sections can be vegetated and revert to forest. Additionally, before stopping the road access, other regional people should not harvest excessive forest, which may lead to extinction. Therefore, you (environment officer) as a concerned authority should help us in this regard.

Date; 14/04/2022

Signed

1. Pema
2. Kinley Wangmo
3. Phub Sithub
4. Sangchum
5. KinleyDema
6. Buthri
7. Chelthem
8. Zangmo
9. Sangay Dema
10. Cheki Pelmo
11. Zangmo (Sha so kha)
12. Dawa Gyeltshen (Tsogpa)
13. Kinley Cheki (Accountant)
14. Lhaden (Secretary)

Chair: Namgyal Dorji

Appendix 10: Sample Grievance Registration Format

(To be available in English or Dzongkha – the national language of Bhutan)

The MOWHS welcomes complaints, suggestions, queries, and comments regarding the project implementation. We encourage any person or group with a grievance to provide their name and contact information to get in touch with you for clarification and feedback.

Should you choose to include your details but want that information to remain confidential, please inform us by writing/typing *(CONFIDENTIAL)* above your name. Thank you.

Date		Place of registration			
Contact Information/Personal Details					
Name		Gender	Male	Female	Age
Home Address					
Village / Town					
ID Number					
District					
Phone no.					
E-mail					
Complaint/Suggestion/Comment/Question					
Please provide details of the grievance (who, what, where, and how):					

*Note: You may attach a document, letter, or note in the grievance form.					
How do you want us to reach you for feedback or updates on your comment/grievance?					

FOR OFFICIAL USE ONLY

Registered by: (Name of official registering grievance)	
If – then mode:	
<ul style="list-style-type: none"> ▪ Note/Letter ▪ E-mail ▪ Verbal/Telephonic 	
Reviewed by: (Name, Signature, Position)	
Action Taken:(Date, Venue of Meeting, Other details)	
Whether Action Taken Disclosed:	<ul style="list-style-type: none"> ▪ Yes ▪ No
Means of Disclosure:	

GRIEVANCES RECORD AND ACTION TAKEN

Sr. No.	Date	Name and Contact No. of Complainant	Type of Complaint	Place	Status of Redress	Remarks